

DATASHEET

FIBP Rabbit Polyclonal Antibody

CAT. NO. APA12898

KEY FEATURES

Target	FIBP	Source / Host	Rabbit
Reactivity	Human	Clonality	Polyclonal
Applications	WB	Conjugation	Unconjugated
Form / Buffer	Liquid in 0.42% Potassium phosphate, 0.87% Sodium chloride, pH 7.3, 30% glycerol, and 0.01% sodium azide.		Storage at-20°C

BACKGROUND

May be involved in mitogenic function of FGF1. May mediate with IER2 FGF-signaling in the establishment of laterality in the embryo .

APPLICATION

To ensure optimal assay performance, AREX recommends conducting reagent titration tailored to each testing system for optimal detection results.

WB	1:500 - 1:1000
----	----------------

*Results are sample-specific. Please refer to your local assay conditions and test parameters for reference.

PRODUCT OVERVIEW

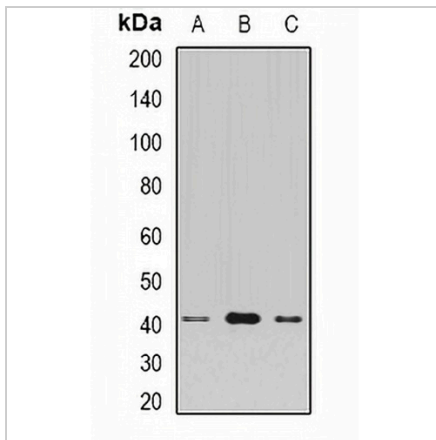
Description	Rabbit polyclonal antibody to FIBP
Specificity	Recognizes endogenous levels of FIBP protein.
Antibody Type	Primary antibody
Immunogen	Recombinant fusion protein of human FIBP
Purification	The antibody was purified by immunogen affinity chromatography.
Molecular Weight	Predicted: 41 kD; Observed: 42 kD
Form/Buffer	Liquid in 0.42% Potassium phosphate, 0.87% Sodium chloride, pH 7.3, 30% glycerol, and 0.01% sodium azide.
Alternative Names	Acidic fibroblast growth factor intracellular-binding protein; aFGF intracellular-binding protein; FGF-1 intracellular-binding protein
Gene Symbol	FIBP
Entrez Gene	9158(Human); 58249(Mouse)
SwissProt	O43427(Human); Q9JI19(Mouse)

*AREX continuously optimizes our products. Webpage content may not reflect the latest updates. For inquiries, please contact info@arexbio.com or your local distributor.

*Clone Number, Reactivity, Source/Host and Clonality can be found in the product name and Key Features section above.

DATASHEET**FIBP Rabbit Polyclonal Antibody**

CAT. NO. APA12898

DATA

Western blot analysis of FIBP expression in SW620 (A), MCF7 (B), rat brain (C) whole cell lysates. (Predicted band size: 41 kD; Observed band size: 42 kD)

STORAGE

Store at 4°C short term. For long term storage, store at -20°C, avoiding freeze/thaw cycles.

NOTE

For Research Use Only. Not for diagnostic, therapeutics, prophylactic or in vivo use.