

## DATASHEET

# H6PD Rabbit Polyclonal Antibody

CAT. NO. APA12900

### KEY FEATURES

Target	H6PD	Source / Host	Rabbit
Reactivity	Human, Mouse	Clonality	Polyclonal
Applications	WB	Conjugation	Unconjugated
Form / Buffer	Liquid in 0.42% Potassium phosphate, 0.87% Sodium chloride, pH 7.3, 30% glycerol, and 0.01% sodium azide.	Storage	at-20°C

### BACKGROUND

Bifunctional enzyme localized in the lumen of the endoplasmic reticulum that catalyzes the first two steps of the oxidative branch of the pentose phosphate pathway/shunt, an alternative to glycolysis and a major source of reducing power and metabolic intermediates for biosynthetic processes . Has a hexose-6-phosphate dehydrogenase activity, with broad substrate specificity compared to glucose-6-phosphate 1-dehydrogenase/G6PD, and catalyzes the first step of the pentose phosphate pathway . In addition, acts as a 6-phosphogluconolactonase and catalyzes the second step of the pentose phosphate pathway . May have a dehydrogenase activity for alternative substrates including glucosamine 6-phosphate and glucose 6-sulfate .

### APPLICATION

To ensure optimal assay performance, AREX recommends conducting reagent titration tailored to each testing system for optimal detection results.

WB	1:500 - 1:1000
----	----------------

\*Results are sample-specific. Please refer to your local assay conditions and test parameters for reference.

### PRODUCT OVERVIEW

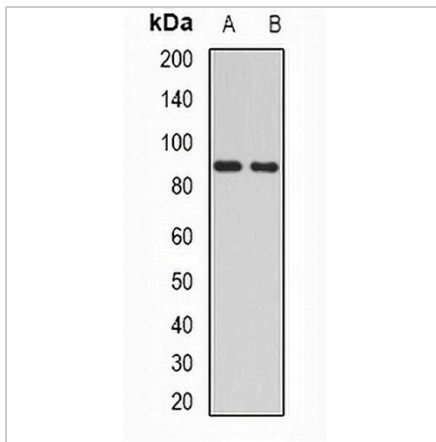
Description	Rabbit polyclonal antibody to H6PD
Specificity	Recognizes endogenous levels of H6PD protein.
Antibody Type	Primary antibody
Immunogen	Recombinant fusion protein of human H6PD
Purification	The antibody was purified by immunogen affinity chromatography.
Molecular Weight	Predicted: 88 kD; Observed: 89 kD
Form/Buffer	Liquid in 0.42% Potassium phosphate, 0.87% Sodium chloride, pH 7.3, 30% glycerol, and 0.01% sodium azide.
Alternative Names	GDH; GDH/6PGL endoplasmic bifunctional protein
Gene Symbol	H6PD
Entrez Gene	9563(Human)
SwissProt	O95479(Human)

\*AREX continuously optimizes our products. Webpage content may not reflect the latest updates. For inquiries, please contact [info@arexbio.com](mailto:info@arexbio.com) or your local distributor.

\*Clone Number, Reactivity, Source/Host and Clonality can be found in the product name and Key Features section above.

**DATASHEET****H6PD Rabbit Polyclonal Antibody**

CAT. NO. APA12900

**DATA**

Western blot analysis of H6PD expression in mouse liver (A), mouse kidney (B) whole cell lysates. (Predicted band size: 88 kD; Observed band size: 89 kD)

**STORAGE**

Store at 4°C short term. For long term storage, store at -20°C, avoiding freeze/thaw cycles.

**NOTE**

For Research Use Only. Not for diagnostic, therapeutics, prophylactic or in vivo use.