

## DATASHEET

# RNF40 Rabbit Polyclonal Antibody

CAT. NO. APA12902

### KEY FEATURES

Target	RNF40	Source / Host	Rabbit
Reactivity	Human, Mouse, Rat	Clonality	Polyclonal
Applications	WB, IHC	Conjugation	Unconjugated
Form / Buffer	Liquid in 0.42% Potassium phosphate, 0.87% Sodium chloride, pH 7.3, 30% glycerol, and 0.01% sodium azide.		Storage at -20°C

### BACKGROUND

Component of the RNF20/40 E3 ubiquitin-protein ligase complex that mediates monoubiquitination of 'Lys-120' of histone H2B (H2BK120ub1). H2BK120ub1 gives a specific tag for epigenetic transcriptional activation and is also prerequisite for histone H3 'Lys-4' and 'Lys-79' methylation (H3K4me and H3K79me, respectively). It thereby plays a central role in histone code and gene regulation. The RNF20/40 complex forms a H2B ubiquitin ligase complex in cooperation with the E2 enzyme UBE2A or UBE2B; reports about the cooperation with UBE2E1/UBCH are contradictory. Required for transcriptional activation of Hox genes.

### APPLICATION

To ensure optimal assay performance, AREX recommends conducting reagent titration tailored to each testing system for optimal detection results.

WB	1:500 - 1:1000
IHC	1:50 - 1:200

\*Results are sample-specific. Please refer to your local assay conditions and test parameters for reference.

### PRODUCT OVERVIEW

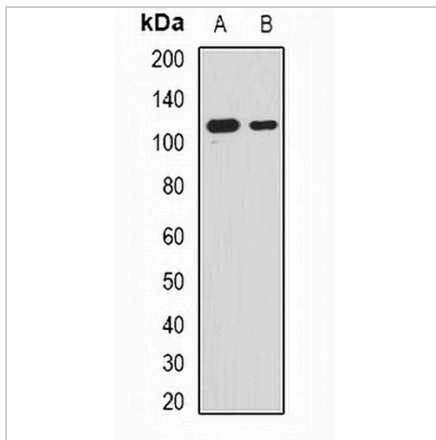
Description	Rabbit polyclonal antibody to RNF40
Specificity	Recognizes endogenous levels of RNF40 protein.
Antibody Type	Primary antibody
Immunogen	Recombinant fusion protein of human RNF40
Purification	The antibody was purified by immunogen affinity chromatography.
Molecular Weight	Predicted: 94; Observed: 130 kD
Form/Buffer	Liquid in 0.42% Potassium phosphate, 0.87% Sodium chloride, pH 7.3, 30% glycerol, and 0.01% sodium azide.
Alternative Names	BRE1B; KIAA0661; E3 ubiquitin-protein ligase BRE1B; BRE1-B; 95 kDa retinoblastoma-associated protein; RBP95; RING finger protein 40
Gene Symbol	RNF40
Entrez Gene	9810(Human); 233900(Mouse); 266712(Rat)
SwissProt	O75150(Human); Q3U319(Mouse); Q8CJB9(Rat)

\*AREX continuously optimizes our products. Webpage content may not reflect the latest updates. For inquiries, please contact [info@arexbio.com](mailto:info@arexbio.com) or your local distributor.

\*Clone Number, Reactivity, Source/Host and Clonality can be found in the product name and Key Features section above.

**DATASHEET****RNF40 Rabbit Polyclonal Antibody**

CAT. NO. APA12902

**DATA**

Western blot analysis of RNF40 expression in MCF7 (A), HepG2 (B) whole cell lysates. (Predicted band size: 94; 102; 113 kD; Observed band size: 130 kD)

**STORAGE**

Store at 4°C short term. For long term storage, store at -20°C, avoiding freeze/thaw cycles.

**NOTE**

For Research Use Only. Not for diagnostic, therapeutics, prophylactic or in vivo use.