

DATASHEET

NCS1 Rabbit Polyclonal Antibody

CAT. NO. APA12907

KEY FEATURES

Target	NCS1	Source / Host	Rabbit
Reactivity	Human, Mouse, Rat	Clonality	Polyclonal
Applications	WB	Conjugation	Unconjugated
Form / Buffer	Liquid in 0.42% Potassium phosphate, 0.87% Sodium chloride, pH 7.3, 30% glycerol, and 0.01% sodium azide.		Storage at -20°C

BACKGROUND

Neuronal calcium sensor, regulator of G protein-coupled receptor phosphorylation in a calcium dependent manner. Directly regulates GRK1 (RHOK), but not GRK2 to GRK5. Can substitute for calmodulin . Stimulates PI4KB kinase activity . Involved in long-term synaptic plasticity through its interaction with PICK1 . May also play a role in neuron differentiation through inhibition of the activity of N-type voltage-gated calcium channel .

APPLICATION

To ensure optimal assay performance, AREX recommends conducting reagent titration tailored to each testing system for optimal detection results.

WB	1:500 - 1:1000
----	----------------

*Results are sample-specific. Please refer to your local assay conditions and test parameters for reference.

PRODUCT OVERVIEW

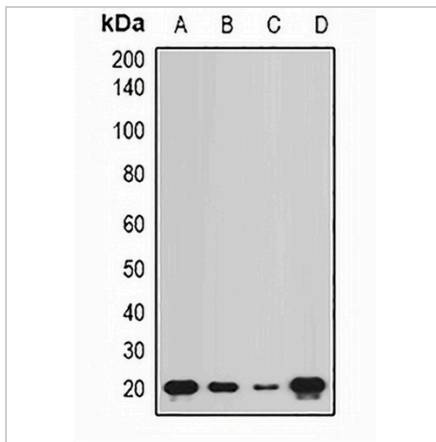
Description	Rabbit polyclonal antibody to NCS1
Specificity	Recognizes endogenous levels of NCS1 protein.
Antibody Type	Primary antibody
Immunogen	Recombinant fusion protein of human NCS1
Purification	The antibody was purified by immunogen affinity chromatography.
Molecular Weight	Predicted: 19; Observed: 20 kD
Form/Buffer	Liquid in 0.42% Potassium phosphate, 0.87% Sodium chloride, pH 7.3, 30% glycerol, and 0.01% sodium azide.
Alternative Names	FLUP; FREQ; Neuronal calcium sensor 1; NCS-1; Frequenin homolog; Frequenin-like protein; Frequenin-like ubiquitous protein
Gene Symbol	NCS1
Entrez Gene	23413(Human); 14299(Mouse); 65153(Rat)
SwissProt	P62166(Human); Q8BNY6(Mouse); P62168(Rat)

*AREX continuously optimizes our products. Webpage content may not reflect the latest updates. For inquiries, please contact info@arexbio.com or your local distributor.

*Clone Number, Reactivity, Source/Host and Clonality can be found in the product name and Key Features section above.

DATASHEET**NCS1 Rabbit Polyclonal Antibody**

CAT. NO. APA12907

DATA

Western blot analysis of NCS1 expression in Hela (A), MCF7 (B), mouse bone marrow (C), rat kidney (D) whole cell lysates. (Predicted band size: 19; 21 kD; Observed band size: 20 kD)

STORAGE

Store at 4°C short term. For long term storage, store at -20°C, avoiding freeze/thaw cycles.

NOTE

For Research Use Only. Not for diagnostic, therapeutics, prophylactic or in vivo use.