

DATASHEET

PTRH2 Rabbit Polyclonal Antibody

CAT. NO. APA12911

KEY FEATURES

| | | | |
|---------------|---|---------------|---------------------|
| Target | PTRH2 | Source / Host | Rabbit |
| Reactivity | Human, Mouse, Rat | Clonality | Polyclonal |
| Applications | WB, IHC, IF/ICC | Conjugation | Unconjugated |
| Form / Buffer | Liquid in 0.42% Potassium phosphate, 0.87% Sodium chloride, pH 7.3, 30% glycerol, and 0.01% sodium azide. | | Storage at -20°C |

BACKGROUND

Peptidyl-tRNA hydrolase which releases tRNAs from the ribosome during protein synthesis . Promotes caspase-independent apoptosis by regulating the function of two transcriptional regulators, AES and TLE1.

APPLICATION

To ensure optimal assay performance, AREX recommends conducting reagent titration tailored to each testing system for optimal detection results.

| | |
|--------|----------------|
| WB | 1:500 - 1:2000 |
| IHC | 1:50 - 1:200 |
| IF/ICC | 1:50 - 1:200 |

*Results are sample-specific. Please refer to your local assay conditions and test parameters for reference.

PRODUCT OVERVIEW

| | |
|-------------------|---|
| Description | Rabbit polyclonal antibody to PTRH2 |
| Specificity | Recognizes endogenous levels of PTRH2 protein. |
| Antibody Type | Primary antibody |
| Immunogen | Recombinant fusion protein of human PTRH2 |
| Purification | The antibody was purified by immunogen affinity chromatography. |
| Molecular Weight | Predicted: 19 kD; Observed: 19 kD |
| Form/Buffer | Liquid in 0.42% Potassium phosphate, 0.87% Sodium chloride, pH 7.3, 30% glycerol, and 0.01% sodium azide. |
| Alternative Names | BIT1; PTH2; Peptidyl-tRNA hydrolase 2 mitochondrial; PTH 2; Bcl-2 inhibitor of transcription 1 |
| Gene Symbol | PTRH2 |
| Entrez Gene | 51651(Human); 217057(Mouse) |
| SwissProt | Q9Y3E5(Human); Q8R2Y8(Mouse) |

*AREX continuously optimizes our products. Webpage content may not reflect the latest updates. For inquiries, please contact info@arexbio.com or your local distributor.

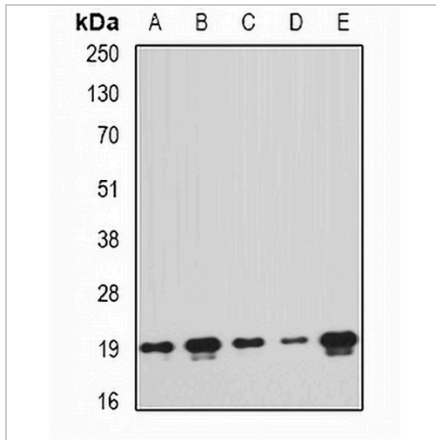
*Clone Number, Reactivity, Source/Host and Clonality can be found in the product name and Key Features section above.

DATASHEET

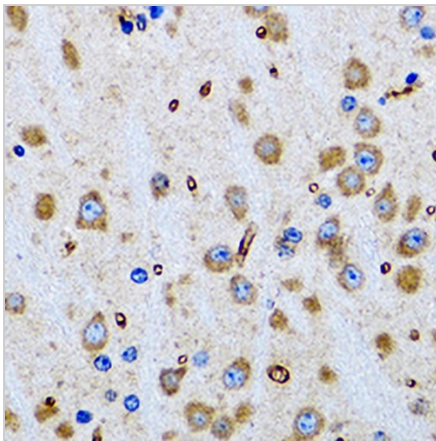
PTRH2 Rabbit Polyclonal Antibody

CAT. NO. APA12911

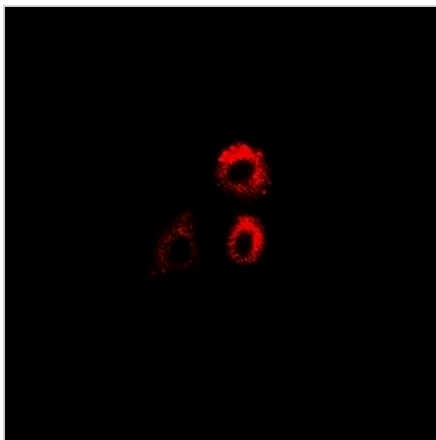
DATA



Western blot analysis of PTRH2 expression in MCF7 (A), A549 (B), mouse liver (C), mouse spleen (D), rat brain (E) whole cell lysates. (Predicted band size: 19 kD; Observed band size: 19 kD)



Immunohistochemical analysis of PTRH2 staining in rat brain formalin fixed paraffin embedded tissue section. The section was pre-treated using heat mediated antigen retrieval with sodium citrate buffer (pH 6.0). The section was then incubated with the antibody at room temperature and detected using an HRP conjugated compact polymer system. DAB was used as the chromogen. The section was then counterstained with haematoxylin and mounted with DPX.



Immunofluorescent analysis of PTRH2 staining in MCF7 cells. Formalin-fixed cells were permeabilized with 0.1% Triton X-100 in TBS for 5-10 minutes and blocked with 3% BSA-PBS for 30 minutes at room temperature. Cells were probed with the primary antibody in 3% BSA-PBS and incubated overnight at 4 °C in a humidified chamber. Cells were washed with PBST and incubated with a DyLight 594-conjugated secondary antibody (red) in PBS at room temperature in the dark.

STORAGE

Store at 4°C short term. For long term storage, store at -20°C, avoiding freeze/thaw cycles.

NOTE

For Research Use Only. Not for diagnostic, therapeutics, prophylactic or in vivo use.