

DATASHEET

CHRAC17 Rabbit Polyclonal Antibody

CAT. NO. APA12912

KEY FEATURES

Target	CHRAC17	Source / Host	Rabbit
Reactivity	Human	Clonality	Polyclonal
Applications	WB, IF/ICC	Conjugation	Unconjugated
Form / Buffer	Liquid in 0.42% Potassium phosphate, 0.87% Sodium chloride, pH 7.3, 30% glycerol, and 0.01% sodium azide.		Storage at-20°C

BACKGROUND

Accessory component of the DNA polymerase epsilon complex . Participates in DNA repair and in chromosomal DNA replication . Forms a complex with CHRAC1 and binds naked DNA, which is then incorporated into chromatin, aided by the nucleosome-remodeling activity of ISWI/SNF2H and ACF1 . Does not enhance nucleosome sliding activity of the ACF-5 ISWI chromatin remodeling complex .

APPLICATION

To ensure optimal assay performance, AREX recommends conducting reagent titration tailored to each testing system for optimal detection results.

WB	1:500 - 1:2000
IF/ICC	1:50 - 1:100

*Results are sample-specific. Please refer to your local assay conditions and test parameters for reference.

PRODUCT OVERVIEW

Description	Rabbit polyclonal antibody to CHRAC17
Specificity	Recognizes endogenous levels of CHRAC17 protein.
Antibody Type	Primary antibody
Immunogen	Recombinant fusion protein of human CHRAC17
Purification	The antibody was purified by immunogen affinity chromatography.
Molecular Weight	Predicted: 16 kD; Observed: 16 kD
Form/Buffer	Liquid in 0.42% Potassium phosphate, 0.87% Sodium chloride, pH 7.3, 30% glycerol, and 0.01% sodium azide.
Alternative Names	CHRAC17; DNA polymerase epsilon subunit 3; Arsenic-transactivated protein; AsTP; Chromatin accessibility complex 17 kDa protein; CHRAC-17; HuCHRAC17; DNA polymerase II subunit 3; DNA polymerase epsilon subunit p17
Gene Symbol	POLE3
Entrez Gene	54107(Human)
SwissProt	Q9NRF9(Human)

*AREX continuously optimizes our products. Webpage content may not reflect the latest updates. For inquiries, please contact info@arexbio.com or your local distributor.

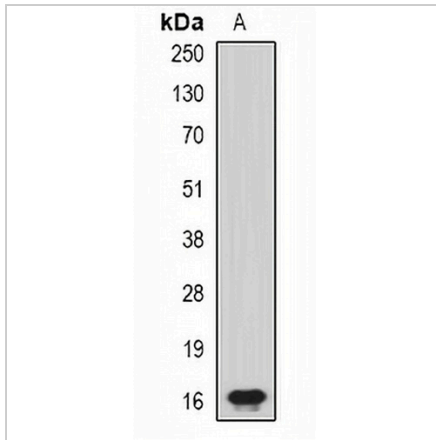
*Clone Number, Reactivity, Source/Host and Clonality can be found in the product name and Key Features section above.

DATASHEET

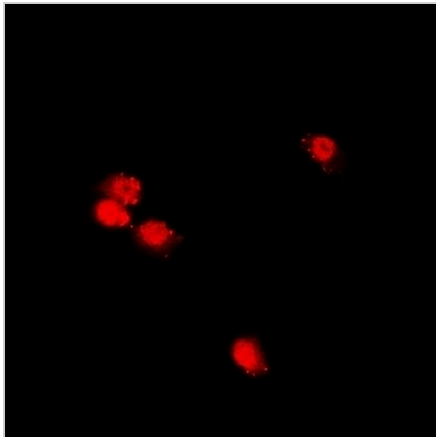
CHRAC17 Rabbit Polyclonal Antibody

CAT. NO. APA12912

DATA



Western blot analysis of CHRAC17 expression in MCF7 (A) whole cell lysates. (Predicted band size: 16 kD; Observed band size: 16 kD)



Immunofluorescent analysis of CHRAC17 staining in U2OS cells. Formalin-fixed cells were permeabilized with 0.1% Triton X-100 in TBS for 5-10 minutes and blocked with 3% BSA-PBS for 30 minutes at room temperature. Cells were probed with the primary antibody in 3% BSA-PBS and incubated overnight at 4 °C in a humidified chamber. Cells were washed with PBST and incubated with a DyLight 594-conjugated secondary antibody (red) in PBS at room temperature in the dark.

STORAGE

Store at 4°C short term. For long term storage, store at -20°C, avoiding freeze/thaw cycles.

NOTE

For Research Use Only. Not for diagnostic, therapeutics, prophylactic or in vivo use.