

DATASHEET

KIF2B Rabbit Polyclonal Antibody

CAT. NO. APA12914

KEY FEATURES

Target	KIF2B	Source / Host	Rabbit
Reactivity	Human, Mouse, Rat	Clonality	Polyclonal
Applications	WB	Conjugation	Unconjugated
Form / Buffer	Liquid in 0.42% Potassium phosphate, 0.87% Sodium chloride, pH 7.3, 30% glycerol, and 0.01% sodium azide.		Storage at -20°C

BACKGROUND

Plus end-directed microtubule-dependent motor required for spindle assembly and chromosome movement. Has microtubule depolymerization activity . Plays a role in chromosome congression .

APPLICATION

To ensure optimal assay performance, AREX recommends conducting reagent titration tailored to each testing system for optimal detection results.

WB	1:500 - 1:1000
----	----------------

*Results are sample-specific. Please refer to your local assay conditions and test parameters for reference.

PRODUCT OVERVIEW

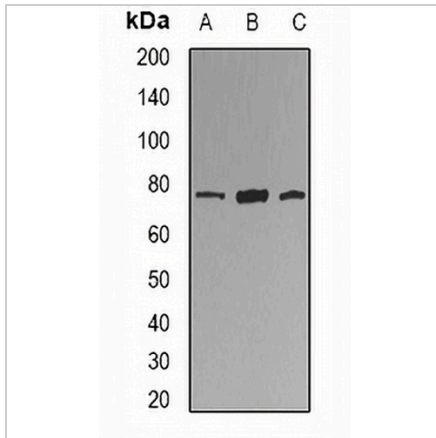
Description	Rabbit polyclonal antibody to KIF2B
Specificity	Recognizes endogenous levels of KIF2B protein.
Antibody Type	Primary antibody
Immunogen	Recombinant fusion protein of human KIF2B
Purification	The antibody was purified by immunogen affinity chromatography.
Molecular Weight	Predicted: 76 kD; Observed: 76 kD
Form/Buffer	Liquid in 0.42% Potassium phosphate, 0.87% Sodium chloride, pH 7.3, 30% glycerol, and 0.01% sodium azide.
Alternative Names	Kinesin-like protein KIF2B
Gene Symbol	KIF2B
Entrez Gene	84643(Human); 73470(Mouse); 287624(Rat)
SwissProt	Q8N4N8(Human); Q8C0N1(Mouse); Q5XI51(Rat)

*AREX continuously optimizes our products. Webpage content may not reflect the latest updates. For inquiries, please contact info@arexbio.com or your local distributor.

*Clone Number, Reactivity, Source/Host and Clonality can be found in the product name and Key Features section above.

DATASHEET**KIF2B Rabbit Polyclonal Antibody**

CAT. NO. APA12914

DATA

Western blot analysis of KIF2B expression in U937 (A), mouse lung (B), rat lung (C) whole cell lysates. (Predicted band size: 76 kD; Observed band size: 76 kD)

STORAGE

Store at 4°C short term. For long term storage, store at -20°C, avoiding freeze/thaw cycles.

NOTE

For Research Use Only. Not for diagnostic, therapeutics, prophylactic or in vivo use.