

DATASHEET

Acid Ceramidase Rabbit Polyclonal Antibody

CAT. NO. APA12920

KEY FEATURES

Target	Acid Ceramidase	Source / Host	Rabbit
Reactivity	Human, Mouse, Rat	Clonality	Polyclonal
Applications	WB	Conjugation	Unconjugated
Form / Buffer	Liquid in 0.42% Potassium phosphate, 0.87% Sodium chloride, pH 7.3, 30% glycerol, and 0.01% sodium azide.		Storage at -20°C

BACKGROUND

Lysosomal ceramidase that hydrolyzes sphingolipid ceramides into sphingosine and free fatty acids at acidic pH . Ceramides, sphingosine, and its phosphorylated form sphingosine-1-phosphate are bioactive lipids that mediate cellular signaling pathways regulating several biological processes including cell proliferation, apoptosis and differentiation . Has a higher catalytic efficiency towards C12-ceramides versus other ceramides . Also catalyzes the reverse reaction allowing the synthesis of ceramides from fatty acids and sphingosine .

APPLICATION

To ensure optimal assay performance, AREX recommends conducting reagent titration tailored to each testing system for optimal detection results.

WB	1:500 - 1:2000
----	----------------

*Results are sample-specific. Please refer to your local assay conditions and test parameters for reference.

PRODUCT OVERVIEW

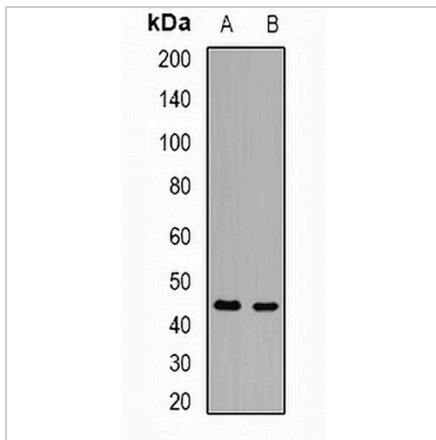
Description	Rabbit polyclonal antibody to Acid Ceramidase
Specificity	Recognizes endogenous levels of Acid Ceramidase protein.
Antibody Type	Primary antibody
Immunogen	Recombinant fusion protein of human Acid Ceramidase
Purification	The antibody was purified by immunogen affinity chromatography.
Molecular Weight	Predicted: 44 kD; Observed: 44 kD
Form/Buffer	Liquid in 0.42% Potassium phosphate, 0.87% Sodium chloride, pH 7.3, 30% glycerol, and 0.01% sodium azide.
Alternative Names	ASAH; Acid ceramidase; AC; ACDase; Acid CDase; Acylsphingosine deacylase; N-acylsphingosine amidohydrolase; Putative 32 kDa heart protein; PHP32
Gene Symbol	ASAH1
Entrez Gene	427(Human); 11886(Mouse); 84431(Rat)
SwissProt	Q13510(Human); Q9WV54(Mouse); Q6P7S1(Rat)

*AREX continuously optimizes our products. Webpage content may not reflect the latest updates. For inquiries, please contact info@arexbio.com or your local distributor.

*Clone Number, Reactivity, Source/Host and Clonality can be found in the product name and Key Features section above.

DATASHEET**Acid Ceramidase Rabbit Polyclonal Antibody**

CAT. NO. APA12920

DATA

Western blot analysis of Acid Ceramidase expression in mouse kidney (A), rat heart (B) whole cell lysates. (Predicted band size: 44 kD; Observed band size: 44 kD)

STORAGE

Store at 4°C short term. For long term storage, store at -20°C, avoiding freeze/thaw cycles.

NOTE

For Research Use Only. Not for diagnostic, therapeutics, prophylactic or in vivo use.