

DATASHEET

SHARP-2 Rabbit Polyclonal Antibody

CAT. NO. APA12922

KEY FEATURES

Target	SHARP-2	Source / Host	Rabbit
Reactivity	Human, Mouse, Rat	Clonality	Polyclonal
Applications	WB, IHC	Conjugation	Unconjugated
Form / Buffer	Liquid in 0.42% Potassium phosphate, 0.87% Sodium chloride, pH 7.3, 30% glycerol, and 0.01% sodium azide.		Storage at -20°C

BACKGROUND

Transcriptional repressor involved in the regulation of the circadian rhythm by negatively regulating the activity of the clock genes and clock-controlled genes . Acts as the negative limb of a novel autoregulatory feedback loop (DEC loop) which differs from the one formed by the PER and CRY transcriptional repressors (PER/CRY loop) . Both these loops are interlocked as it represses the expression of PER1/2 and in turn is repressed by PER1/2 and CRY1/2 . Represses the activity of the circadian transcriptional activator: CLOCK-BMAL1 | BMAL2 heterodimer by competing for the binding to E-box elements (5'-CACGTG-3') found within the promoters of its target genes . Negatively regulates its own expression and the expression of DBP and BHLHE41/DEC2 .

APPLICATION

To ensure optimal assay performance, AREX recommends conducting reagent titration tailored to each testing system for optimal detection results.

WB	1:500 - 1:1000
IHC	1:50 - 1:200

*Results are sample-specific. Please refer to your local assay conditions and test parameters for reference.

PRODUCT OVERVIEW

Description	Rabbit polyclonal antibody to SHARP-2
Specificity	Recognizes endogenous levels of SHARP-2 protein.
Antibody Type	Primary antibody
Immunogen	Recombinant fusion protein of human SHARP-2
Purification	The antibody was purified by immunogen affinity chromatography.
Molecular Weight	Predicted: 45 kD; Observed: 48 kD
Form/Buffer	Liquid in 0.42% Potassium phosphate, 0.87% Sodium chloride, pH 7.3, 30% glycerol, and 0.01% sodium azide.
Alternative Names	BHLHB2; DEC1; SHARP2; STRA13; Class E basic helix-loop-helix protein 40; bHLHe40; Class B basic helix-loop-helix protein 2; bHLHb2; Differentially expressed in chondrocytes protein 1; DEC1; Enhancer-of-split and hairy-related protein 2; SHARP-2; Stimulated by retinoic acid gene 13 protein
Gene Symbol	BHLHE40
Entrez Gene	8553(Human); 20893(Mouse)
SwissProt	O14503(Human); O35185(Mouse)

*AREX continuously optimizes our products. Webpage content may not reflect the latest updates. For inquiries, please contact info@arexbio.com or your local distributor.

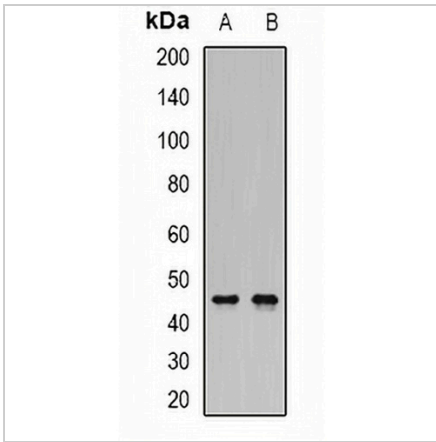
*Clone Number, Reactivity, Source/Host and Clonality can be found in the product name and Key Features section above.

DATASHEET

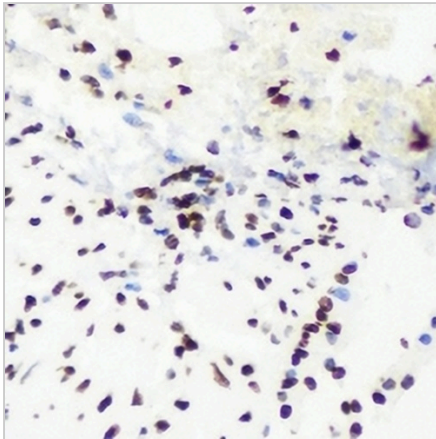
SHARP-2 Rabbit Polyclonal Antibody

CAT. NO. APA12922

DATA



Western blot analysis of SHARP-2 expression in HepG2 (A), mouse kidney (B) whole cell lysates. (Predicted band size: 45 kD; Observed band size: 48 kD)



Immunohistochemical analysis of SHARP-2 staining in mouse lung formalin fixed paraffin embedded tissue section. The section was pre-treated using heat mediated antigen retrieval with sodium citrate buffer (pH 6.0). The section was then incubated with the antibody at room temperature and detected using an HRP conjugated compact polymer system. DAB was used as the chromogen. The section was then counterstained with haematoxylin and mounted with DPX.

STORAGE

Store at 4°C short term. For long term storage, store at -20°C, avoiding freeze/thaw cycles.

NOTE

For Research Use Only. Not for diagnostic, therapeutics, prophylactic or in vivo use.