

DATASHEET

Calpain reg Rabbit Polyclonal Antibody

CAT. NO. APA12923

KEY FEATURES

Target	Calpain reg	Source / Host	Rabbit
Reactivity	Human, Mouse, Rat	Clonality	Polyclonal
Applications	WB, IHC, IF/ICC	Conjugation	Unconjugated
Form / Buffer	Liquid in 0.42% Potassium phosphate, 0.87% Sodium chloride, pH 7.3, 30% glycerol, and 0.01% sodium azide.		Storage at -20°C

BACKGROUND

Regulatory subunit of the calcium-regulated non-lysosomal thiol-protease which catalyzes limited proteolysis of substrates involved in cytoskeletal remodeling and signal transduction. Essential for embryonic development .

APPLICATION

To ensure optimal assay performance, AREX recommends conducting reagent titration tailored to each testing system for optimal detection results.

WB	1:500 - 1:2000
IHC	1:50 - 1:200
IF/ICC	1:50 - 1:200

*Results are sample-specific. Please refer to your local assay conditions and test parameters for reference.

PRODUCT OVERVIEW

Description	Rabbit polyclonal antibody to Calpain reg
Specificity	Recognizes endogenous levels of Calpain reg protein.
Antibody Type	Primary antibody
Immunogen	Recombinant fusion protein of human Calpain reg
Purification	The antibody was purified by immunogen affinity chromatography.
Molecular Weight	Predicted: 28 kD; Observed: 28 kD
Form/Buffer	Liquid in 0.42% Potassium phosphate, 0.87% Sodium chloride, pH 7.3, 30% glycerol, and 0.01% sodium azide.
Alternative Names	CAPN4; CAPNS; Calpain small subunit 1; CSS1; Calcium-activated neutral proteinase small subunit; CANP small subunit; Calcium-dependent protease small subunit; CDPS; Calcium-dependent protease small subunit 1; Calpain regulatory subunit
Gene Symbol	CAPNS1
Entrez Gene	826(Human); 12336(Mouse); 29156(Rat)
SwissProt	P04632(Human); O88456(Mouse); Q64537(Rat)

*AREX continuously optimizes our products. Webpage content may not reflect the latest updates. For inquiries, please contact info@arexbio.com or your local distributor.

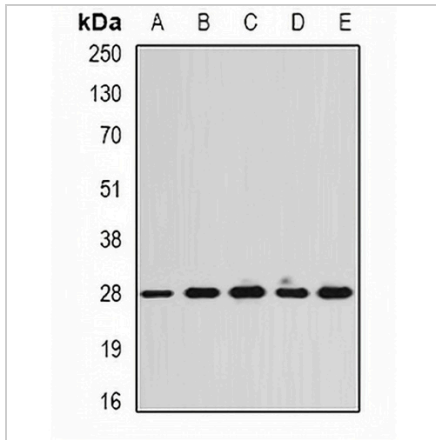
*Clone Number, Reactivity, Source/Host and Clonality can be found in the product name and Key Features section above.

DATASHEET

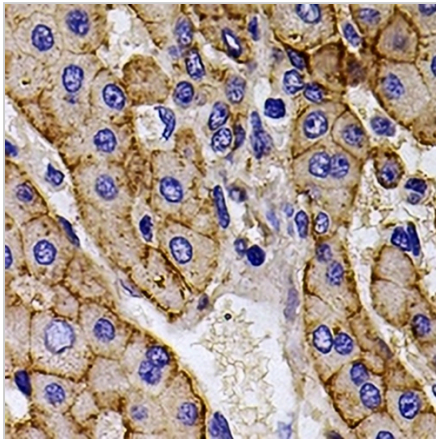
Calpain reg Rabbit Polyclonal Antibody

CAT. NO. APA12923

DATA



Western blot analysis of Calpain reg expression in Hela (A), SKOV3 (B), mouse heart (C), mouse spleen (D), rat lung (E) whole cell lysates. (Predicted band size: 28 kD; Observed band size: 28 kD)



Immunohistochemical analysis of Calpain reg staining in human liver cancer formalin fixed paraffin embedded tissue section. The section was pre-treated using heat mediated antigen retrieval with sodium citrate buffer (pH 6.0). The section was then incubated with the antibody at room temperature and detected using an HRP conjugated compact polymer system. DAB was used as the chromogen. The section was then counterstained with haematoxylin and mounted with DPX.

STORAGE

Store at 4°C short term. For long term storage, store at -20°C, avoiding freeze/thaw cycles.

NOTE

For Research Use Only. Not for diagnostic, therapeutics, prophylactic or in vivo use.