

DATASHEET

TCP1-delta Rabbit Polyclonal Antibody

CAT. NO. APA12926

KEY FEATURES

Target	TCP1-delta	Source / Host	Rabbit
Reactivity	Human, Mouse, Rat	Clonality	Polyclonal
Applications	WB, IF/ICC	Conjugation	Unconjugated
Form / Buffer	Liquid in 0.42% Potassium phosphate, 0.87% Sodium chloride, pH 7.3, 30% glycerol, and 0.01% sodium azide.		Storage at-20°C

BACKGROUND

Component of the chaperonin-containing T-complex (TRiC), a molecular chaperone complex that assists the folding of actin, tubulin and other proteins upon ATP hydrolysis, a molecular chaperone complex that assists the folding of actin, tubulin and other proteins upon ATP hydrolysis. The TRiC complex mediates the folding of WRAP53/TCAB1, thereby regulating telomere maintenance. As part of the TRiC complex may play a role in the assembly of BBSome, a complex involved in ciliogenesis regulating transports vesicles to the cilia.

APPLICATION

To ensure optimal assay performance, AREX recommends conducting reagent titration tailored to each testing system for optimal detection results.

WB	1:500 - 1:1000
IF/ICC	1:50 - 1:200

*Results are sample-specific. Please refer to your local assay conditions and test parameters for reference.

PRODUCT OVERVIEW

Description	Rabbit polyclonal antibody to TCP1-delta
Specificity	Recognizes endogenous levels of TCP1-delta protein.
Antibody Type	Primary antibody
Immunogen	Recombinant fusion protein of human TCP1-delta
Purification	The antibody was purified by immunogen affinity chromatography.
Molecular Weight	Predicted: 54; Observed: 58 kD
Form/Buffer	Liquid in 0.42% Potassium phosphate, 0.87% Sodium chloride, pH 7.3, 30% glycerol, and 0.01% sodium azide.
Alternative Names	CCTD; SRB; T-complex protein 1 subunit delta; TCP-1-delta; CCT-delta; Stimulator of TAR RNA-binding
Gene Symbol	CCT4
Entrez Gene	10575(Human); 12464(Mouse); 29374(Rat)
SwissProt	P50991(Human); P80315(Mouse); Q7TPB1(Rat)

*AREX continuously optimizes our products. Webpage content may not reflect the latest updates. For inquiries, please contact info@arexbio.com or your local distributor.

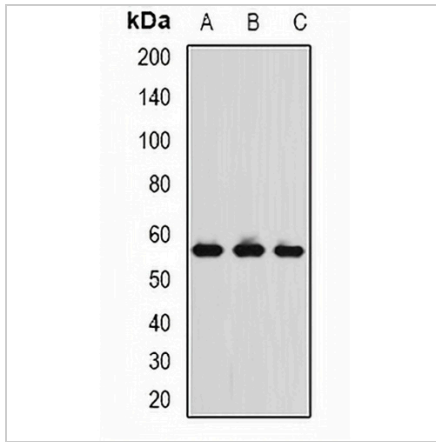
*Clone Number, Reactivity, Source/Host and Clonality can be found in the product name and Key Features section above.

DATASHEET

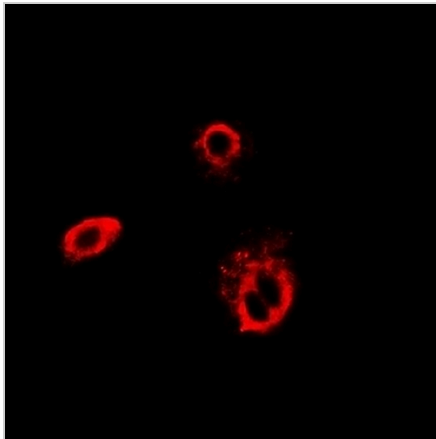
TCP1-delta Rabbit Polyclonal Antibody

CAT. NO. APA12926

DATA



Western blot analysis of TCP1-delta expression in MCF7 (A), THP1 (B), mouse spleen (C) whole cell lysates. (Predicted band size: 54; 57 kD; Observed band size: 58 kD)



Immunofluorescent analysis of TCP1-delta staining in HeLa cells. Formalin-fixed cells were permeabilized with 0.1% Triton X-100 in TBS for 5-10 minutes and blocked with 3% BSA-PBS for 30 minutes at room temperature. Cells were probed with the primary antibody in 3% BSA-PBS and incubated overnight at 4 °C in a humidified chamber. Cells were washed with PBST and incubated with a DyLight 594-conjugated secondary antibody (red) in PBS at room temperature in the dark.

STORAGE

Store at 4°C short term. For long term storage, store at -20°C, avoiding freeze/thaw cycles.

NOTE

For Research Use Only. Not for diagnostic, therapeutics, prophylactic or in vivo use.