

**DATASHEET**

**Int11 Rabbit Polyclonal Antibody**

CAT. NO. APA12928

**KEY FEATURES**

Target	Int11	Source / Host	Rabbit
Reactivity	Human, Mouse, Rat	Clonality	Polyclonal
Applications	WB, IF/ICC	Conjugation	Unconjugated
Form / Buffer	Liquid in 0.42% Potassium phosphate, 0.87% Sodium chloride, pH 7.3, 30% glycerol, and 0.01% sodium azide.		Storage at-20°C

**BACKGROUND**

RNA endonuclease component of the integrator complex, a multiprotein complex that terminates RNA polymerase II (Pol II) transcription in the promoter-proximal region of genes transcription in the promoter-proximal region of genes . The integrator complex provides a quality checkpoint during transcription elongation by driving premature transcription termination of transcripts that are unfavorably configured for transcriptional elongation: the complex terminates transcription by (1) catalyzing dephosphorylation of the C-terminal domain (CTD) of Pol II subunit POLR2A/RPB1 and SUPT5H/SPT5, (2) degrading the exiting nascent RNA transcript via endonuclease activity and (3) promoting the release of Pol II from bound DNA .

**APPLICATION**

To ensure optimal assay performance, AREX recommends conducting reagent titration tailored to each testing system for optimal detection results.

WB	1:500 - 1:2000
IF/ICC	1:10 - 1:100

\*Results are sample-specific. Please refer to your local assay conditions and test parameters for reference.

**PRODUCT OVERVIEW**

Description	Rabbit polyclonal antibody to Int11
Specificity	Recognizes endogenous levels of Int11 protein.
Antibody Type	Primary antibody
Immunogen	Recombinant fusion protein of human Int11
Purification	The antibody was purified by immunogen affinity chromatography.
Molecular Weight	Predicted: 56; Observed: 68 kD
Form/Buffer	Liquid in 0.42% Potassium phosphate, 0.87% Sodium chloride, pH 7.3, 30% glycerol, and 0.01% sodium azide.
Alternative Names	INTS11; RC68; Integrator complex subunit 11; Int11; Cleavage and polyadenylation-specific factor 3-like protein; CPSF3-like protein; Protein related to CPSF subunits of 68 kDa; RC-68
Gene Symbol	CPSF3L
Entrez Gene	54973(Human); 71957(Mouse); 298688(Rat)
SwissProt	Q5TA45(Human); Q9CWS4(Mouse); Q3MHC2(Rat)

\*AREX continuously optimizes our products. Webpage content may not reflect the latest updates. For inquiries, please contact [info@arexbio.com](mailto:info@arexbio.com) or your local distributor.

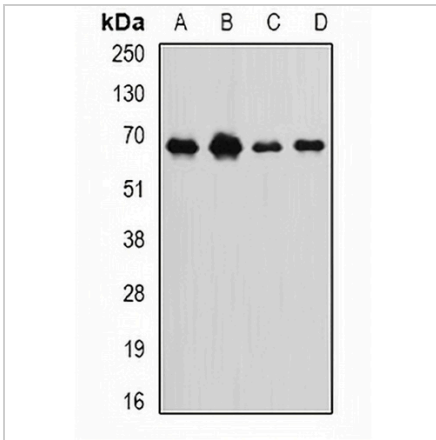
\*Clone Number, Reactivity, Source/Host and Clonality can be found in the product name and Key Features section above.

**DATASHEET**

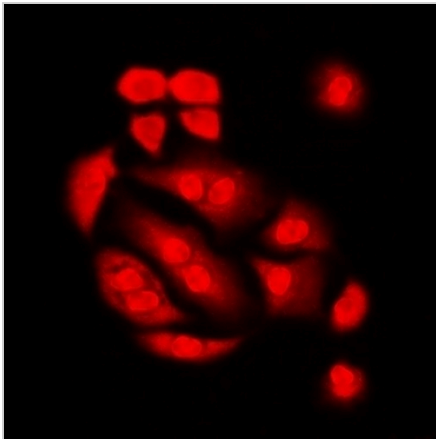
**Int11 Rabbit Polyclonal Antibody**

CAT. NO. APA12928

**DATA**



Western blot analysis of Int11 expression in SKOV3 (A), MCF7 (B), mouse spleen (C), rat liver (D) whole cell lysates. (Predicted band size: 56; 64; 65; 67; 68 kD; Observed band size: 68 kD)



Immunofluorescent analysis of Int11 staining in HeLa cells. Formalin-fixed cells were permeabilized with 0.1% Triton X-100 in TBS for 5-10 minutes and blocked with 3% BSA-PBS for 30 minutes at room temperature. Cells were probed with the primary antibody in 3% BSA-PBS and incubated overnight at 4 °C in a humidified chamber. Cells were washed with PBST and incubated with a DyLight 594-conjugated secondary antibody (red) in PBS at room temperature in the dark.

**STORAGE**

Store at 4°C short term. For long term storage, store at -20°C, avoiding freeze/thaw cycles.

**NOTE**

For Research Use Only. Not for diagnostic, therapeutics, prophylactic or in vivo use.