

## DATASHEET

# ETFDH Rabbit Polyclonal Antibody

CAT. NO. APA12934

### KEY FEATURES

Target	ETFDH	Source / Host	Rabbit
Reactivity	Human	Clonality	Polyclonal
Applications	WB	Conjugation	Unconjugated
Form / Buffer	Liquid in 0.42% Potassium phosphate, 0.87% Sodium chloride, pH 7.3, 30% glycerol, and 0.01% sodium azide.		Storage at -20°C

### BACKGROUND

Accepts electrons from ETF and reduces ubiquinone.

### APPLICATION

To ensure optimal assay performance, AREX recommends conducting reagent titration tailored to each testing system for optimal detection results.

WB	1:500 - 1:2000
----	----------------

\*Results are sample-specific. Please refer to your local assay conditions and test parameters for reference.

### PRODUCT OVERVIEW

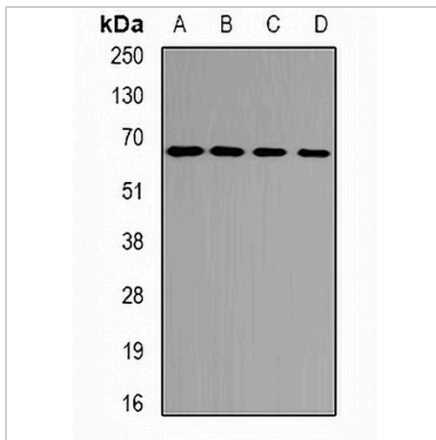
Description	Rabbit polyclonal antibody to ETFDH
Specificity	Recognizes endogenous levels of ETFDH protein.
Antibody Type	Primary antibody
Immunogen	Recombinant fusion protein of human ETFDH
Purification	The antibody was purified by immunogen affinity chromatography.
Molecular Weight	Predicted: 62; Observed: 65 kD
Form/Buffer	Liquid in 0.42% Potassium phosphate, 0.87% Sodium chloride, pH 7.3, 30% glycerol, and 0.01% sodium azide.
Alternative Names	Electron transfer flavoprotein-ubiquinone oxidoreductase mitochondrial; ETF-QO; ETF-ubiquinone oxidoreductase; Electron-transferring-flavoprotein dehydrogenase; ETF dehydrogenase
Gene Symbol	ETFDH
Entrez Gene	2110(Human)
SwissProt	Q16134(Human)

\*AREX continuously optimizes our products. Webpage content may not reflect the latest updates. For inquiries, please contact [info@arexbio.com](mailto:info@arexbio.com) or your local distributor.

\*Clone Number, Reactivity, Source/Host and Clonality can be found in the product name and Key Features section above.

**DATASHEET****ETFDH Rabbit Polyclonal Antibody**

CAT. NO. APA12934

**DATA**

Western blot analysis of ETFDH expression in mouse heart (A), mouse kidney (B), rat liver (C), rat heart (D) whole cell lysates. (Predicted band size: 62; 68 kD; Observed band size: 65 kD)

**STORAGE**

Store at 4°C short term. For long term storage, store at -20°C, avoiding freeze/thaw cycles.

**NOTE**

For Research Use Only. Not for diagnostic, therapeutics, prophylactic or in vivo use.