

DATASHEET

GBE1 Rabbit Polyclonal Antibody

CAT. NO. APA12939

KEY FEATURES

Target	GBE1	Source / Host	Rabbit
Reactivity	Human, Mouse	Clonality	Polyclonal
Applications	WB	Conjugation	Unconjugated
Form / Buffer	Liquid in 0.42% Potassium phosphate, 0.87% Sodium chloride, pH 7.3, 30% glycerol, and 0.01% sodium azide.		Storage at -20°C

BACKGROUND

Glycogen-branching enzyme participates in the glycogen biosynthetic process along with glycogenin and glycogen synthase. Generates alpha-1,6-glucosidic branches from alpha-1,4-linked glucose chains, to increase solubility of the glycogen polymer .

APPLICATION

To ensure optimal assay performance, AREX recommends conducting reagent titration tailored to each testing system for optimal detection results.

WB	1:500 - 1:2000
----	----------------

*Results are sample-specific. Please refer to your local assay conditions and test parameters for reference.

PRODUCT OVERVIEW

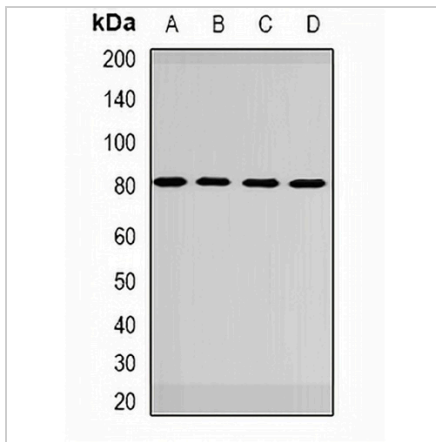
Description	Rabbit polyclonal antibody to GBE1
Specificity	Recognizes endogenous levels of GBE1 protein.
Antibody Type	Primary antibody
Immunogen	Recombinant fusion protein of human GBE1
Purification	The antibody was purified by immunogen affinity chromatography.
Molecular Weight	Predicted: 80 kD; Observed: 80 kD
Form/Buffer	Liquid in 0.42% Potassium phosphate, 0.87% Sodium chloride, pH 7.3, 30% glycerol, and 0.01% sodium azide.
Alternative Names	1,4-alpha-glucan-branching enzyme; Brancher enzyme; Glycogen-branching enzyme
Gene Symbol	GBE1
Entrez Gene	2632(Human); 74185(Mouse)
SwissProt	Q04446(Human); Q9D6Y9(Mouse)

*AREX continuously optimizes our products. Webpage content may not reflect the latest updates. For inquiries, please contact info@arexbio.com or your local distributor.

*Clone Number, Reactivity, Source/Host and Clonality can be found in the product name and Key Features section above.

DATASHEET**GBE1 Rabbit Polyclonal Antibody**

CAT. NO. APA12939

DATA

Western blot analysis of GBE1 expression in HepG2 (A), mouse heart (B), mouse kidney (C), rat liver (D) whole cell lysates. (Predicted band size: 80 kD; Observed band size: 80 kD)

STORAGE

Store at 4°C short term. For long term storage, store at -20°C, avoiding freeze/thaw cycles.

NOTE

For Research Use Only. Not for diagnostic, therapeutics, prophylactic or in vivo use.