

DATASHEET

GMPS Rabbit Polyclonal Antibody

CAT. NO. APA12942

KEY FEATURES

Target	GMPS	Source / Host	Rabbit
Reactivity	Human, Mouse, Rat	Clonality	Polyclonal
Applications	WB	Conjugation	Unconjugated
Form / Buffer	Liquid in 0.42% Potassium phosphate, 0.87% Sodium chloride, pH 7.3, 30% glycerol, and 0.01% sodium azide.	Storage	at-20°C

BACKGROUND

Catalyzes the conversion of xanthine monophosphate (XMP) to GMP in the presence of glutamine and ATP through an adenylylated XMP intermediate.

APPLICATION

To ensure optimal assay performance, AREX recommends conducting reagent titration tailored to each testing system for optimal detection results.

WB	1:500 - 1:2000
----	----------------

*Results are sample-specific. Please refer to your local assay conditions and test parameters for reference.

PRODUCT OVERVIEW

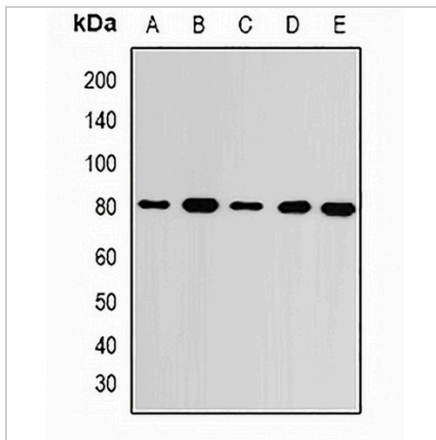
Description	Rabbit polyclonal antibody to GMPS
Specificity	Recognizes endogenous levels of GMPS protein.
Antibody Type	Primary antibody
Immunogen	Recombinant fusion protein of human GMPS
Purification	The antibody was purified by immunogen affinity chromatography.
Molecular Weight	Predicted: 65; Observed: 80 kD
Form/Buffer	Liquid in 0.42% Potassium phosphate, 0.87% Sodium chloride, pH 7.3, 30% glycerol, and 0.01% sodium azide.
Alternative Names	GMP synthase [glutamine-hydrolyzing]; GMP synthetase; Glutamine amidotransferase
Gene Symbol	GMPS
Entrez Gene	8833(Human); 229363(Mouse); 295088(Rat)
SwissProt	P49915(Human); Q3THK7(Mouse); Q4V7C6(Rat)

*AREX continuously optimizes our products. Webpage content may not reflect the latest updates. For inquiries, please contact info@arexbio.com or your local distributor.

*Clone Number, Reactivity, Source/Host and Clonality can be found in the product name and Key Features section above.

DATASHEET**GMPS Rabbit Polyclonal Antibody**

CAT. NO. APA12942

DATA

Western blot analysis of GMPS expression in MCF7 (A), SKOV3 (B), mouse kidney (C), mouse brain (D), rat heart (E) whole cell lysates. (Predicted band size: 65; 76 kD; Observed band size: 80 kD)

STORAGE

Store at 4°C short term. For long term storage, store at -20°C, avoiding freeze/thaw cycles.

NOTE

For Research Use Only. Not for diagnostic, therapeutics, prophylactic or in vivo use.