

DATASHEET

GPAM Rabbit Polyclonal Antibody

CAT. NO. APA12943

KEY FEATURES

Target	GPAM	Source / Host	Rabbit
Reactivity	Human	Clonality	Polyclonal
Applications	WB, IHC	Conjugation	Unconjugated
Form / Buffer	Liquid in 0.42% Potassium phosphate, 0.87% Sodium chloride, pH 7.3, 30% glycerol, and 0.01% sodium azide.		Storage at-20°C

BACKGROUND

Mitochondrial membrane protein that catalyzes the essential first step of biosynthesis of glycerolipids such as triglycerides, phosphatidic acids and lysophosphatidic acids . Esterifies acyl-group from acyl-coenzyme A (acyl-CoA) to the sn-1 position of glycerol-3-phosphate, to produce lysophosphatidic acid . Has a narrow hydrophobic binding cleft that selects for a linear acyl chain . Catalytic activity is higher for substrates with a 16-carbon acyl chain .

APPLICATION

To ensure optimal assay performance, AREX recommends conducting reagent titration tailored to each testing system for optimal detection results.

WB	1:500 - 1:2000
IHC	1:50 - 1:200

*Results are sample-specific. Please refer to your local assay conditions and test parameters for reference.

PRODUCT OVERVIEW

Description	Rabbit polyclonal antibody to GPAM
Specificity	Recognizes endogenous levels of GPAM protein.
Antibody Type	Primary antibody
Immunogen	Recombinant fusion protein of human GPAM
Purification	The antibody was purified by immunogen affinity chromatography.
Molecular Weight	Predicted: 93 kD; Observed: 94 kD
Form/Buffer	Liquid in 0.42% Potassium phosphate, 0.87% Sodium chloride, pH 7.3, 30% glycerol, and 0.01% sodium azide.
Alternative Names	GPAT1; KIAA1560; Glycerol-3-phosphate acyltransferase 1 mitochondrial; GPAT-1
Gene Symbol	GPAM
Entrez Gene	57678(Human)
SwissProt	Q9HCL2(Human)

*AREX continuously optimizes our products. Webpage content may not reflect the latest updates. For inquiries, please contact info@arexbio.com or your local distributor.

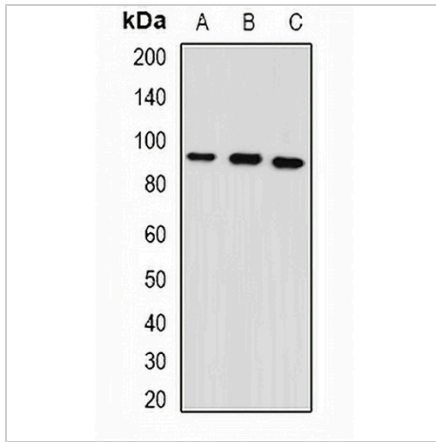
*Clone Number, Reactivity, Source/Host and Clonality can be found in the product name and Key Features section above.

DATASHEET

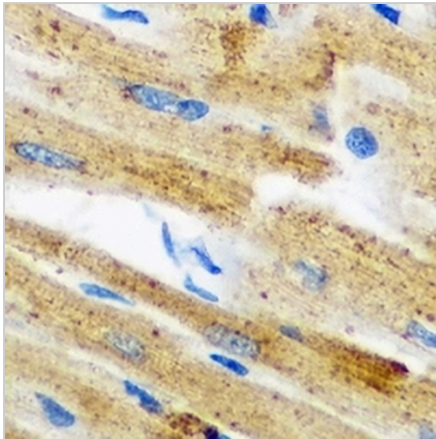
GPAM Rabbit Polyclonal Antibody

CAT. NO. APA12943

DATA



Western blot analysis of GPAM expression in mouse heart (A), mouse lung (B), rat brain (C) whole cell lysates. (Predicted band size: 93 kD; Observed band size: 94 kD)



Immunohistochemical analysis of GPAM staining in mouse heart formalin fixed paraffin embedded tissue section. The section was pre-treated using heat mediated antigen retrieval with sodium citrate buffer (pH 6.0). The section was then incubated with the antibody at room temperature and detected using an HRP conjugated compact polymer system. DAB was used as the chromogen. The section was then counterstained with haematoxylin and mounted with DPX.

STORAGE

Store at 4°C short term. For long term storage, store at -20°C, avoiding freeze/thaw cycles.

NOTE

For Research Use Only. Not for diagnostic, therapeutics, prophylactic or in vivo use.