

DATASHEET

GPD2 Rabbit Polyclonal Antibody

CAT. NO. APA12944

KEY FEATURES

Target	GPD2	Source / Host	Rabbit
Reactivity	Human, Mouse, Rat	Clonality	Polyclonal
Applications	WB, IHC	Conjugation	Unconjugated
Form / Buffer	Liquid in 0.42% Potassium phosphate, 0.87% Sodium chloride, pH 7.3, 30% glycerol, and 0.01% sodium azide.		Storage at -20°C

BACKGROUND

Calcium-responsive mitochondrial glycerol-3-phosphate dehydrogenase which seems to be a key component of the pancreatic beta-cell glucose-sensing device.

APPLICATION

To ensure optimal assay performance, AREX recommends conducting reagent titration tailored to each testing system for optimal detection results.

WB	1:500 - 1:2000
IHC	1:50 - 1:200

*Results are sample-specific. Please refer to your local assay conditions and test parameters for reference.

PRODUCT OVERVIEW

Description	Rabbit polyclonal antibody to GPD2
Specificity	Recognizes endogenous levels of GPD2 protein.
Antibody Type	Primary antibody
Immunogen	Recombinant fusion protein of human GPD2
Purification	The antibody was purified by immunogen affinity chromatography.
Molecular Weight	Predicted: 80 kD; Observed: 80 kD
Form/Buffer	Liquid in 0.42% Potassium phosphate, 0.87% Sodium chloride, pH 7.3, 30% glycerol, and 0.01% sodium azide.
Alternative Names	Glycerol-3-phosphate dehydrogenase mitochondrial; GPD-M; GPDH-M; mtGPD
Gene Symbol	GPD2
Entrez Gene	2820(Human); 14571(Mouse); 25062(Rat)
SwissProt	P43304(Human); Q64521(Mouse); P35571(Rat)

*AREX continuously optimizes our products. Webpage content may not reflect the latest updates. For inquiries, please contact info@arexbio.com or your local distributor.

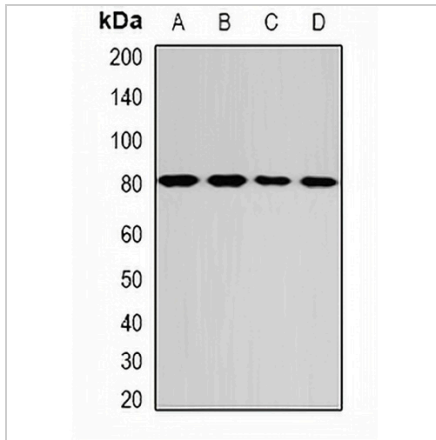
*Clone Number, Reactivity, Source/Host and Clonality can be found in the product name and Key Features section above.

DATASHEET

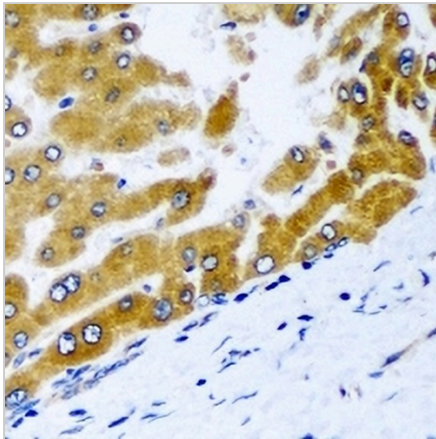
GPD2 Rabbit Polyclonal Antibody

CAT. NO. APA12944

DATA



Western blot analysis of GPD2 expression in MCF7 (A), SW480 (B), mouse liver (C), mouse brain (D) whole cell lysates. (Predicted band size: 80 kD; Observed band size: 80 kD)



Immunohistochemical analysis of GPD2 staining in human liver cancer formalin fixed paraffin embedded tissue section. The section was pre-treated using heat mediated antigen retrieval with sodium citrate buffer (pH 6.0). The section was then incubated with the antibody at room temperature and detected using an HRP conjugated compact polymer system. DAB was used as the chromogen. The section was then counterstained with haematoxylin and mounted with DPX.

STORAGE

Store at 4°C short term. For long term storage, store at -20°C, avoiding freeze/thaw cycles.

NOTE

For Research Use Only. Not for diagnostic, therapeutics, prophylactic or in vivo use.