

DATASHEET

KIF1B Rabbit Polyclonal Antibody

CAT. NO. APA12949

KEY FEATURES

Target	KIF1B	Source / Host	Rabbit
Reactivity	Human, Mouse, Rat	Clonality	Polyclonal
Applications	WB, IHC	Conjugation	Unconjugated
Form / Buffer	Liquid in 0.42% Potassium phosphate, 0.87% Sodium chloride, pH 7.3, 30% glycerol, and 0.01% sodium azide.		Storage at -20°C

BACKGROUND

Has a plus-end-directed microtubule motor activity and functions as a motor for transport of vesicles and organelles along microtubules.

APPLICATION

To ensure optimal assay performance, AREX recommends conducting reagent titration tailored to each testing system for optimal detection results.

WB	1:500 - 1:2000
IHC	1:50 - 1:200

*Results are sample-specific. Please refer to your local assay conditions and test parameters for reference.

PRODUCT OVERVIEW

Description	Rabbit polyclonal antibody to KIF1B
Specificity	Recognizes endogenous levels of KIF1B protein.
Antibody Type	Primary antibody
Immunogen	Recombinant fusion protein of human KIF1B
Purification	The antibody was purified by immunogen affinity chromatography.
Molecular Weight	Predicted: 130; Observed: 204 kD
Form/Buffer	Liquid in 0.42% Potassium phosphate, 0.87% Sodium chloride, pH 7.3, 30% glycerol, and 0.01% sodium azide.
Alternative Names	KIAA0591; KIAA1448; Kinesin-like protein KIF1B; Klp
Gene Symbol	KIF1B
Entrez Gene	23095(Human); 16561(Mouse); 117548(Rat)
SwissProt	O60333(Human); Q60575(Mouse); O88658(Rat)

*AREX continuously optimizes our products. Webpage content may not reflect the latest updates. For inquiries, please contact info@arexbio.com or your local distributor.

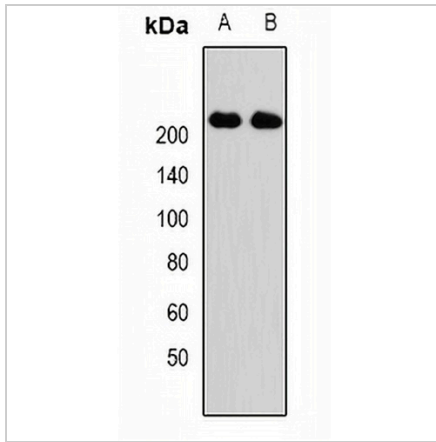
*Clone Number, Reactivity, Source/Host and Clonality can be found in the product name and Key Features section above.

DATASHEET

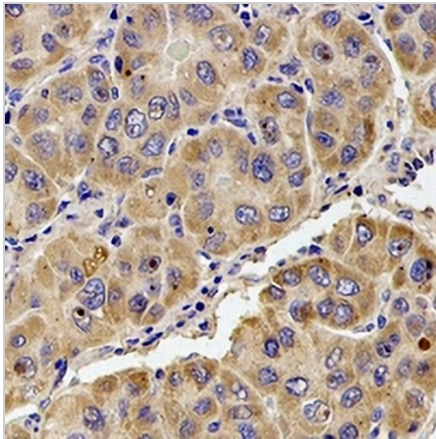
KIF1B Rabbit Polyclonal Antibody

CAT. NO. APA12949

DATA



Western blot analysis of KIF1B expression in HeLa (A), SKOV3 (B) whole cell lysates. (Predicted band size: 130; 199; 204; 205 kD; Observed band size: 204 kD)



Immunohistochemical analysis of KIF1B staining in human liver cancer formalin fixed paraffin embedded tissue section. The section was pre-treated using heat mediated antigen retrieval with sodium citrate buffer (pH 6.0). The section was then incubated with the antibody at room temperature and detected using an HRP conjugated compact polymer system. DAB was used as the chromogen. The section was then counterstained with haematoxylin and mounted with DPX.

STORAGE

Store at 4°C short term. For long term storage, store at -20°C, avoiding freeze/thaw cycles.

NOTE

For Research Use Only. Not for diagnostic, therapeutics, prophylactic or in vivo use.