

**DATASHEET**

**Melanophilin Rabbit Polyclonal Antibody**

CAT. NO. APA12954

**KEY FEATURES**

Target	Melanophilin	Source / Host	Rabbit
Reactivity	Human, Mouse, Rat	Clonality	Polyclonal
Applications	WB, IF/ICC	Conjugation	Unconjugated
Form / Buffer	Liquid in 0.42% Potassium phosphate, 0.87% Sodium chloride, pH 7.3, 30% glycerol, and 0.01% sodium azide.		Storage at-20°C

**BACKGROUND**

Rab effector protein involved in melanosome transport. Serves as link between melanosome-bound RAB27A and the motor protein MYO5A.

**APPLICATION**

To ensure optimal assay performance, AREX recommends conducting reagent titration tailored to each testing system for optimal detection results.

WB	1:500 - 1:2000
IF/ICC	1:50 - 1:200

\*Results are sample-specific. Please refer to your local assay conditions and test parameters for reference.

**PRODUCT OVERVIEW**

Description	Rabbit polyclonal antibody to Melanophilin
Specificity	Recognizes endogenous levels of Melanophilin protein.
Antibody Type	Primary antibody
Immunogen	Recombinant fusion protein of human Melanophilin
Purification	The antibody was purified by immunogen affinity chromatography.
Molecular Weight	Predicted: 50; Observed: 75 kD
Form/Buffer	Liquid in 0.42% Potassium phosphate, 0.87% Sodium chloride, pH 7.3, 30% glycerol, and 0.01% sodium azide.
Alternative Names	SLAC2A; Melanophilin; Exophilin-3; Slp homolog lacking C2 domains a; SlaC2-a; Synaptotagmin-like protein 2a
Gene Symbol	MLPH
Entrez Gene	79083(Human); 171531(Mouse)
SwissProt	Q9BV36(Human); Q91V27(Mouse)

\*AREX continuously optimizes our products. Webpage content may not reflect the latest updates. For inquiries, please contact [info@arexbio.com](mailto:info@arexbio.com) or your local distributor.

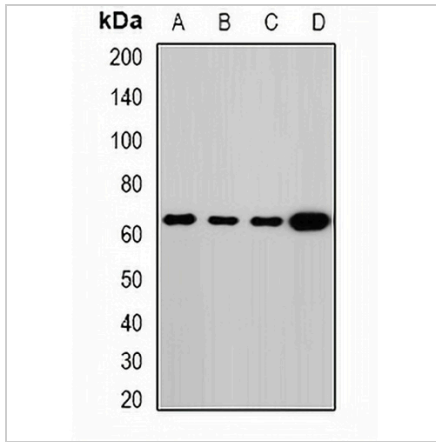
\*Clone Number, Reactivity, Source/Host and Clonality can be found in the product name and Key Features section above.

**DATASHEET**

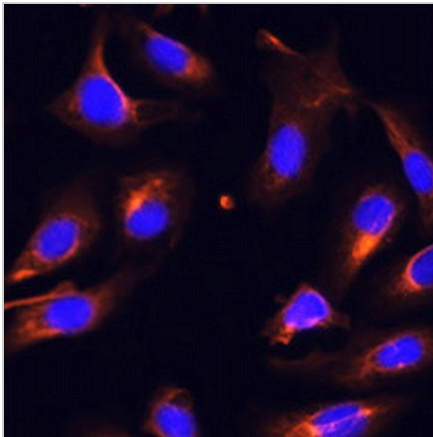
**Melanophilin Rabbit Polyclonal Antibody**

CAT. NO. APA12954

**DATA**



Western blot analysis of Melanophilin expression in MCF7 (A), HT29 (B), mouse lung (C), rat lung (D) whole cell lysates. (Predicted band size: 50; 52; 60; 62; 65 kD; Observed band size: 75 kD)



Immunofluorescent analysis of Melanophilin staining in U2OS cells. Formalin-fixed cells were permeabilized with 0.1% Triton X-100 in TBS for 5-10 minutes and blocked with 3% BSA-PBS for 30 minutes at room temperature. Cells were probed with the primary antibody in 3% BSA-PBS and incubated overnight at 4 °C in a humidified chamber. Cells were washed with PBST and incubated with a AREX® Fluor 594-conjugated secondary antibody (red) in PBS at room temperature in the dark. DAPI was used to stain the cell nuclei (blue).

**STORAGE**

Store at 4°C short term. For long term storage, store at -20°C, avoiding freeze/thaw cycles.

**NOTE**

For Research Use Only. Not for diagnostic, therapeutics, prophylactic or in vivo use.