

## DATASHEET

# MPP2 Rabbit Polyclonal Antibody

CAT. NO. APA12955

### KEY FEATURES

Target	MPP2	Source / Host	Rabbit
Reactivity	Human, Mouse, Rat	Clonality	Polyclonal
Applications	WB	Conjugation	Unconjugated
Form / Buffer	Liquid in 0.42% Potassium phosphate, 0.87% Sodium chloride, pH 7.3, 30% glycerol, and 0.01% sodium azide.		Storage at -20°C

### BACKGROUND

Postsynaptic MAGUK scaffold protein that links CADM1 cell adhesion molecules to core components of the postsynaptic density . In CA1 pyramidal neurons, required for synaptic KCNN2-containing channel function and long-term potentiation expression . Seems to negatively regulate SRC function in epithelial cells .

### APPLICATION

To ensure optimal assay performance, AREX recommends conducting reagent titration tailored to each testing system for optimal detection results.

WB	1:500 - 1:1000
----	----------------

\*Results are sample-specific. Please refer to your local assay conditions and test parameters for reference.

### PRODUCT OVERVIEW

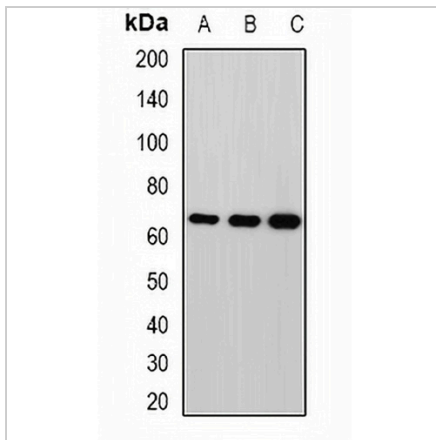
Description	Rabbit polyclonal antibody to MPP2
Specificity	Recognizes endogenous levels of MPP2 protein.
Antibody Type	Primary antibody
Immunogen	Recombinant fusion protein of human MPP2
Purification	The antibody was purified by immunogen affinity chromatography.
Molecular Weight	Predicted: 46; Observed: 68 kD
Form/Buffer	Liquid in 0.42% Potassium phosphate, 0.87% Sodium chloride, pH 7.3, 30% glycerol, and 0.01% sodium azide.
Alternative Names	DLG2; MAGUK p55 subfamily member 2; Discs large homolog 2; Protein MPP2
Gene Symbol	MPP2
Entrez Gene	4355(Human); 50997(Mouse)
SwissProt	Q14168(Human); Q9WV34(Mouse)

\*AREX continuously optimizes our products. Webpage content may not reflect the latest updates. For inquiries, please contact [info@arexbio.com](mailto:info@arexbio.com) or your local distributor.

\*Clone Number, Reactivity, Source/Host and Clonality can be found in the product name and Key Features section above.

**DATASHEET****MPP2 Rabbit Polyclonal Antibody**

CAT. NO. APA12955

**DATA****STORAGE**

Store at 4°C short term. For long term storage, store at -20°C, avoiding freeze/thaw cycles.

**NOTE**

For Research Use Only. Not for diagnostic, therapeutics, prophylactic or in vivo use.