

DATASHEET

ALG-2 Rabbit Polyclonal Antibody

CAT. NO. APA12963

KEY FEATURES

Target	ALG-2	Source / Host	Rabbit
Reactivity	Human, Mouse, Rat	Clonality	Polyclonal
Applications	WB, IP	Conjugation	Unconjugated
Form / Buffer	Liquid in 0.42% Potassium phosphate, 0.87% Sodium chloride, pH 7.3, 30% glycerol, and 0.01% sodium azide.		Storage at-20°C

BACKGROUND

Calcium sensor that plays a key role in processes such as endoplasmic reticulum (ER)-Golgi vesicular transport, endosomal biogenesis or membrane repair. Acts as an adapter that bridges unrelated proteins or stabilizes weak protein-protein complexes in response to calcium: calcium-binding triggers exposure of apolar surface, promoting interaction with different sets of proteins thanks to 3 different hydrophobic pockets, leading to translocation to membranes -Golgi vesicular transport, endosomal biogenesis or membrane repair.

APPLICATION

To ensure optimal assay performance, AREX recommends conducting reagent titration tailored to each testing system for optimal detection results.

WB	1:500 - 1:1000
IP	1:10 - 1:50

*Results are sample-specific. Please refer to your local assay conditions and test parameters for reference.

PRODUCT OVERVIEW

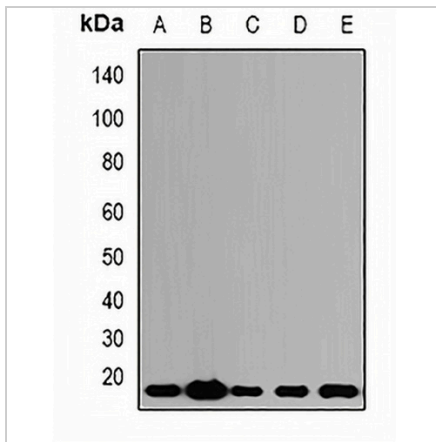
Description	Rabbit polyclonal antibody to ALG-2
Specificity	Recognizes endogenous levels of ALG-2 protein.
Antibody Type	Primary antibody
Immunogen	Recombinant fusion protein of human ALG-2
Purification	The antibody was purified by immunogen affinity chromatography.
Molecular Weight	Predicted: 7; Observed: 17 kD
Form/Buffer	Liquid in 0.42% Potassium phosphate, 0.87% Sodium chloride, pH 7.3, 30% glycerol, and 0.01% sodium azide.
Alternative Names	ALG2; Programmed cell death protein 6; Apoptosis-linked gene 2 protein; Probable calcium-binding protein ALG-2
Gene Symbol	PDCD6
Entrez Gene	10016(Human); 18570(Mouse)
SwissProt	O75340(Human); P12815(Mouse)

*AREX continuously optimizes our products. Webpage content may not reflect the latest updates. For inquiries, please contact info@arexbio.com or your local distributor.

*Clone Number, Reactivity, Source/Host and Clonality can be found in the product name and Key Features section above.

DATASHEET**ALG-2 Rabbit Polyclonal Antibody**

CAT. NO. APA12963

DATA

Western blot analysis of ALG-2 expression in SW620 (A), HepG2 (B), mouse kidney (C), mouse lung (D), rat ovary (E) whole cell lysates. (Predicted band size: 7; 21 kD; Observed band size: 17 kD)

STORAGE

Store at 4°C short term. For long term storage, store at -20°C, avoiding freeze/thaw cycles.

NOTE

For Research Use Only. Not for diagnostic, therapeutics, prophylactic or in vivo use.