

**DATASHEET**
**PP2C-alpha Rabbit Polyclonal Antibody**
**CAT. NO. APA12968**
**KEY FEATURES**

|               |   |               |                    |
|---------------|---|---------------|--------------------|
| Target        | PP2C-alpha  | Source / Host | Rabbit             |
| Reactivity    | Human, Mouse, Rat   | Clonality     | Polyclonal         |
| Applications  | WB, IF/ICC  | Conjugation   | Unconjugated       |
| Form / Buffer | Liquid in 0.42% Potassium phosphate, 0.87% Sodium chloride, pH 7.3, 30% glycerol, and 0.01% sodium azide. |               | Storage<br>at-20°C |

**BACKGROUND**

Enzyme with a broad specificity. Negatively regulates TGF-beta signaling through dephosphorylating SMAD2 and SMAD3, resulting in their dissociation from SMAD4, nuclear export of the SMADs and termination of the TGF-beta-mediated signaling. Dephosphorylates PRKAA1 and PRKAA2. Plays an important role in the termination of TNF-mediated NF-kappa-B activation through dephosphorylating and inactivating IKKKB/IKKB.

**APPLICATION**

To ensure optimal assay performance, AREX recommends conducting reagent titration tailored to each testing system for optimal detection results.

|        |                |
|--------|----------------|
| WB     | 1:500 - 1:2000 |
| IF/ICC | 1:50 - 1:200   |

\*Results are sample-specific. Please refer to your local assay conditions and test parameters for reference.

**PRODUCT OVERVIEW**

|                   |   |
|-------------------|---|
| Description       | Rabbit polyclonal antibody to PP2C-alpha  |
| Specificity       | Recognizes endogenous levels of PP2C-alpha protein.   |
| Antibody Type     | Primary antibody  |
| Immunogen         | Recombinant fusion protein of human PP2C-alpha  |
| Purification      | The antibody was purified by immunogen affinity chromatography.   |
| Molecular Weight  | Predicted: 42 kD; Observed: 42 kD   |
| Form/Buffer       | Liquid in 0.42% Potassium phosphate, 0.87% Sodium chloride, pH 7.3, 30% glycerol, and 0.01% sodium azide. |
| Alternative Names | PPPM1A; Protein phosphatase 1A; Protein phosphatase 2C isoform alpha; PP2C-alpha; Protein phosphatase IA  |
| Gene Symbol       | PPM1A   |
| Entrez Gene       | 5494(Human); 19042(Mouse); 24666(Rat)   |
| SwissProt         | P35813(Human); P49443(Mouse); P20650(Rat)   |

\*AREX continuously optimizes our products. Webpage content may not reflect the latest updates. For inquiries, please contact [info@arexbio.com](mailto:info@arexbio.com) or your local distributor.

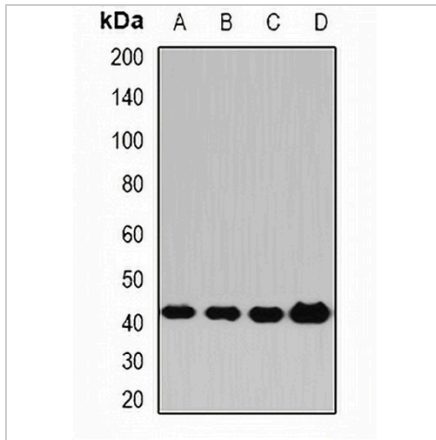
\*Clone Number, Reactivity, Source/Host and Clonality can be found in the product name and Key Features section above.

**DATASHEET**

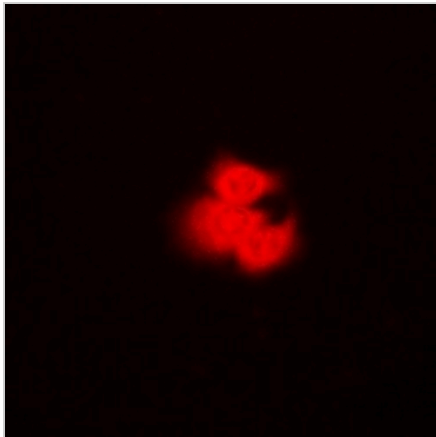
**PP2C-alpha Rabbit Polyclonal Antibody**

CAT. NO. APA12968

**DATA**



Western blot analysis of PP2C-alpha expression in HeLa (A), HepG2 (B), mouse liver (C), rat brain (D) whole cell lysates. (Predicted band size: 42 kD; Observed band size: 42 kD)



Immunofluorescent analysis of PP2C-alpha staining in HeLa cells. Formalin-fixed cells were permeabilized with 0.1% Triton X-100 in TBS for 5-10 minutes and blocked with 3% BSA-PBS for 30 minutes at room temperature. Cells were probed with the primary antibody in 3% BSA-PBS and incubated overnight at 4 °C in a humidified chamber. Cells were washed with PBST and incubated with a DyLight 594-conjugated secondary antibody (red) in PBS at room temperature in the dark.

**STORAGE**

Store at 4°C short term. For long term storage, store at -20°C, avoiding freeze/thaw cycles.

**NOTE**

For Research Use Only. Not for diagnostic, therapeutics, prophylactic or in vivo use.