

## DATASHEET

# PSAT1 Rabbit Polyclonal Antibody

CAT. NO. APA12969

### KEY FEATURES

Target	PSAT1	Source / Host	Rabbit
Reactivity	Human, Mouse, Rat	Clonality	Polyclonal
Applications	WB	Conjugation	Unconjugated
Form / Buffer	Liquid in 0.42% Potassium phosphate, 0.87% Sodium chloride, pH 7.3, 30% glycerol, and 0.01% sodium azide.		Storage at -20°C

### BACKGROUND

Involved in L-serine biosynthesis via the phosphorylated pathway, a three-step pathway converting the glycolytic intermediate 3-phospho-D-glycerate into L-serine. Catalyzes the second step, that is the pyridoxal 5'-phosphate-dependent transamination of 3-phosphohydroxypyruvate and L-glutamate to O-phosphoserine (OPS) and alpha-ketoglutarate. Acts as an inhibitor of ferroptosis in response to interferon-gamma (IFNG) by promoting GPX4 stability: following phosphorylation by CAMK2A, PSAT1 interacts with GPX4 and provides 2-oxoglutarate to EGLN3, leading to GPX4 hydroxylation and stability.

### APPLICATION

To ensure optimal assay performance, AREX recommends conducting reagent titration tailored to each testing system for optimal detection results.

WB	1:500 - 1:1000
----	----------------

\*Results are sample-specific. Please refer to your local assay conditions and test parameters for reference.

### PRODUCT OVERVIEW

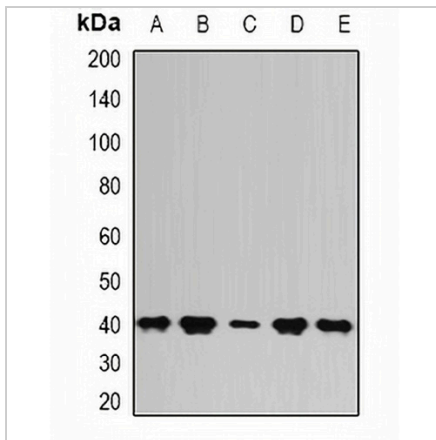
Description	Rabbit polyclonal antibody to PSAT1
Specificity	Recognizes endogenous levels of PSAT1 protein.
Antibody Type	Primary antibody
Immunogen	Recombinant fusion protein of human PSAT1
Purification	The antibody was purified by immunogen affinity chromatography.
Molecular Weight	Predicted: 40 kD; Observed: 40 kD
Form/Buffer	Liquid in 0.42% Potassium phosphate, 0.87% Sodium chloride, pH 7.3, 30% glycerol, and 0.01% sodium azide.
Alternative Names	PSA; Phosphoserine aminotransferase; Phosphohydroxythreonine aminotransferase; PSAT
Gene Symbol	PSAT1
Entrez Gene	29968(Human)
SwissProt	Q9Y617(Human)

\*AREX continuously optimizes our products. Webpage content may not reflect the latest updates. For inquiries, please contact [info@arexbio.com](mailto:info@arexbio.com) or your local distributor.

\*Clone Number, Reactivity, Source/Host and Clonality can be found in the product name and Key Features section above.

**DATASHEET****PSAT1 Rabbit Polyclonal Antibody**

CAT. NO. APA12969

**DATA**

Western blot analysis of PSAT1 expression in Hela (A), SKOV3 (B), mouse kidney (C), mouse thymus (D), rat brain (E) whole cell lysates. (Predicted band size: 40 kD; Observed band size: 40 kD)

**STORAGE**

Store at 4°C short term. For long term storage, store at -20°C, avoiding freeze/thaw cycles.

**NOTE**

For Research Use Only. Not for diagnostic, therapeutics, prophylactic or in vivo use.