

DATASHEET

Ribophorin-1 Rabbit Polyclonal Antibody

CAT. NO. APA12974

KEY FEATURES

| | | | |
|---------------|---|---------------|---------------------|
| Target | Ribophorin-1 | Source / Host | Rabbit |
| Reactivity | Human, Mouse, Rat | Clonality | Polyclonal |
| Applications | WB, IHC, IF/ICC | Conjugation | Unconjugated |
| Form / Buffer | Liquid in 0.42% Potassium phosphate, 0.87% Sodium chloride, pH 7.3, 30% glycerol, and 0.01% sodium azide. | | Storage at -20°C |

BACKGROUND

Subunit of the oligosaccharyl transferase (OST) complex that catalyzes the initial transfer of a defined glycan (Glc(3)Man(9)GlcNAc(2) in eukaryotes) from the lipid carrier dolichol-pyrophosphate to an asparagine residue within an Asn-X-Ser/Thr consensus motif in nascent polypeptide chains, the first step in protein N-glycosylation complex that catalyzes the initial transfer of a defined glycan (Glc(3)Man(9)GlcNAc(2) in eukaryotes) from the lipid carrier dolichol-pyrophosphate to an asparagine residue within an Asn-X-Ser/Thr consensus motif in nascent polypeptide chains, the first step in protein N-glycosylation .

APPLICATION

To ensure optimal assay performance, AREX recommends conducting reagent titration tailored to each testing system for optimal detection results.

| | |
|--------|----------------|
| WB | 1:500 - 1:2000 |
| IHC | 1:50 - 1:200 |
| IF/ICC | 1:50 - 1:200 |

*Results are sample-specific. Please refer to your local assay conditions and test parameters for reference.

PRODUCT OVERVIEW

| | |
|-------------------|--|
| Description | Rabbit polyclonal antibody to Ribophorin-1 |
| Specificity | Recognizes endogenous levels of Ribophorin-1 protein. |
| Antibody Type | Primary antibody |
| Immunogen | Recombinant fusion protein of human Ribophorin-1 |
| Purification | The antibody was purified by immunogen affinity chromatography. |
| Molecular Weight | Predicted: 68 kD; Observed: 68 kD |
| Form/Buffer | Liquid in 0.42% Potassium phosphate, 0.87% Sodium chloride, pH 7.3, 30% glycerol, and 0.01% sodium azide. |
| Alternative Names | Dolichyl-diphosphooligosaccharide--protein glycosyltransferase subunit 1; Dolichyl-diphosphooligosaccharide--protein glycosyltransferase 67 kDa subunit; Ribophorin I; RPN-I; Ribophorin-1 |
| Gene Symbol | RPN1 |
| Entrez Gene | 6184(Human); 25596(Rat) |
| SwissProt | P04843(Human); P07153(Rat) |

*AREX continuously optimizes our products. Webpage content may not reflect the latest updates. For inquiries, please contact info@arexbio.com or your local distributor.

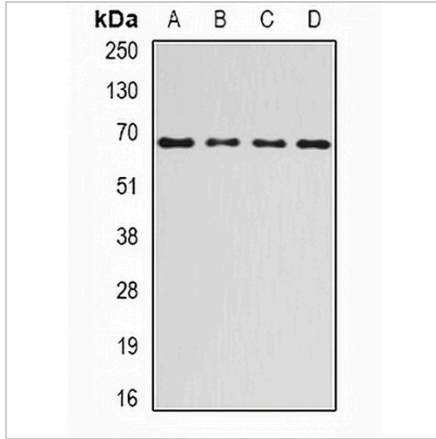
*Clone Number, Reactivity, Source/Host and Clonality can be found in the product name and Key Features section above.

DATASHEET

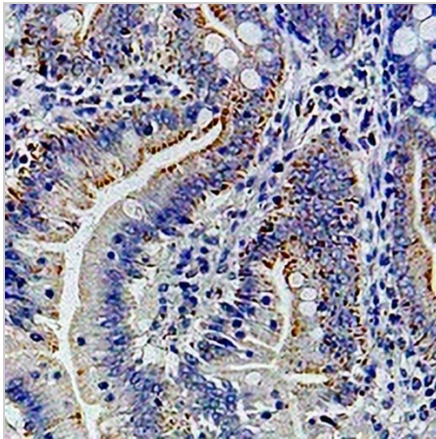
Ribophorin-1 Rabbit Polyclonal Antibody

CAT. NO. APA12974

DATA



Western blot analysis of Ribophorin-1 expression in HepG2 (A), SKOV3 (B), mouse liver (C), rat liver (D) whole cell lysates. (Predicted band size: 68 kD; Observed band size: 68 kD)



Immunohistochemical analysis of Ribophorin-1 staining in human colon cancer formalin fixed paraffin embedded tissue section. The section was pre-treated using heat mediated antigen retrieval with sodium citrate buffer (pH 6.0). The section was then incubated with the antibody at room temperature and detected using an HRP conjugated compact polymer system. DAB was used as the chromogen. The section was then counterstained with haematoxylin and mounted with DPX.

STORAGE

Store at 4°C short term. For long term storage, store at -20°C, avoiding freeze/thaw cycles.

NOTE

For Research Use Only. Not for diagnostic, therapeutics, prophylactic or in vivo use.