

DATASHEET

SCO1 Rabbit Polyclonal Antibody

CAT. NO. APA12977

KEY FEATURES

Target	SCO1	Source / Host	Rabbit
Reactivity	Human, Mouse	Clonality	Polyclonal
Applications	WB, IHC	Conjugation	Unconjugated
Form / Buffer	Liquid in 0.42% Potassium phosphate, 0.87% Sodium chloride, pH 7.3, 30% glycerol, and 0.01% sodium azide.		Storage at-20°C

BACKGROUND

Copper metallochaperone essential for the maturation of cytochrome c oxidase subunit II (MT-CO2/COX2). Together with SCO2, involved in delivering copper to the Cu(A) site on MT-CO2/COX2 . Together with SCO2, involved in delivering copper to the Cu(A) site on MT-CO2/COX2 . Plays an important role in the regulation of copper homeostasis by controlling the abundance and cell membrane localization of copper transporter CTR1 .

APPLICATION

To ensure optimal assay performance, AREX recommends conducting reagent titration tailored to each testing system for optimal detection results.

WB	1:500 - 1:2000
IHC	1:50 - 1:200

*Results are sample-specific. Please refer to your local assay conditions and test parameters for reference.

PRODUCT OVERVIEW

Description	Rabbit polyclonal antibody to SCO1
Specificity	Recognizes endogenous levels of SCO1 protein.
Antibody Type	Primary antibody
Immunogen	Recombinant fusion protein of human SCO1
Purification	The antibody was purified by immunogen affinity chromatography.
Molecular Weight	Predicted: 33 kD; Observed: 34 kD
Form/Buffer	Liquid in 0.42% Potassium phosphate, 0.87% Sodium chloride, pH 7.3, 30% glycerol, and 0.01% sodium azide.
Alternative Names	SCOD1; Protein SCO1 homolog mitochondrial
Gene Symbol	SCO1
Entrez Gene	6341(Human)
SwissProt	O75880(Human)

*AREX continuously optimizes our products. Webpage content may not reflect the latest updates. For inquiries, please contact info@arexbio.com or your local distributor.

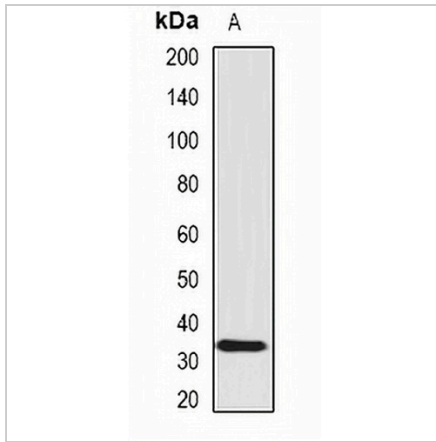
*Clone Number, Reactivity, Source/Host and Clonality can be found in the product name and Key Features section above.

DATASHEET

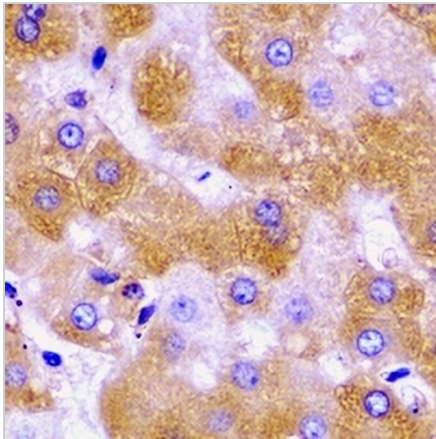
SCO1 Rabbit Polyclonal Antibody

CAT. NO. APA12977

DATA



Western blot analysis of SCO1 expression in HeLa (A) whole cell lysates. (Predicted band size: 33 kD; Observed band size: 34 kD)



Immunohistochemical analysis of SCO1 staining in human liver formalin fixed paraffin embedded tissue section. The section was pre-treated using heat mediated antigen retrieval with sodium citrate buffer (pH 6.0). The section was then incubated with the antibody at room temperature and detected using an HRP conjugated compact polymer system. DAB was used as the chromogen. The section was then counterstained with haematoxylin and mounted with DPX.

STORAGE

Store at 4°C short term. For long term storage, store at -20°C, avoiding freeze/thaw cycles.

NOTE

For Research Use Only. Not for diagnostic, therapeutics, prophylactic or in vivo use.