

**DATASHEET**

**SCYL1 Rabbit Polyclonal Antibody**

CAT. NO. APA12978

**KEY FEATURES**

Target	SCYL1	Source / Host	Rabbit
Reactivity	Human	Clonality	Polyclonal
Applications	WB, IHC, IF/ICC	Conjugation	Unconjugated
Form / Buffer	Liquid in 0.42% Potassium phosphate, 0.87% Sodium chloride, pH 7.3, 30% glycerol, and 0.01% sodium azide.		Storage at -20°C

**BACKGROUND**

Regulates COPI-mediated retrograde protein traffic at the interface between the Golgi apparatus and the endoplasmic reticulum . Involved in the maintenance of the Golgi apparatus morphology .

**APPLICATION**

To ensure optimal assay performance, AREX recommends conducting reagent titration tailored to each testing system for optimal detection results.

WB	1:500 - 1:2000
IHC	1:50 - 1:200
IF/ICC	1:50 - 1:100

\*Results are sample-specific. Please refer to your local assay conditions and test parameters for reference.

**PRODUCT OVERVIEW**

Description	Rabbit polyclonal antibody to SCYL1
Specificity	Recognizes endogenous levels of SCYL1 protein.
Antibody Type	Primary antibody
Immunogen	Recombinant fusion protein of human SCYL1
Purification	The antibody was purified by immunogen affinity chromatography.
Molecular Weight	Predicted: 69; Observed: 70 kD
Form/Buffer	Liquid in 0.42% Potassium phosphate, 0.87% Sodium chloride, pH 7.3, 30% glycerol, and 0.01% sodium azide.
Alternative Names	CVAK90; GKLP; NTKL; TAPK; TEIF; TRAP; N-terminal kinase-like protein; Coated vesicle-associated kinase of 90 kDa; SCY1-like protein 1; Telomerase regulation-associated protein; Telomerase transcriptional element-interacting factor; Teratoma-associated tyrosine kinase
Gene Symbol	SCYL1
Entrez Gene	57410(Human)
SwissProt	Q96KG9(Human)

\*AREX continuously optimizes our products. Webpage content may not reflect the latest updates. For inquiries, please contact [info@arexbio.com](mailto:info@arexbio.com) or your local distributor.

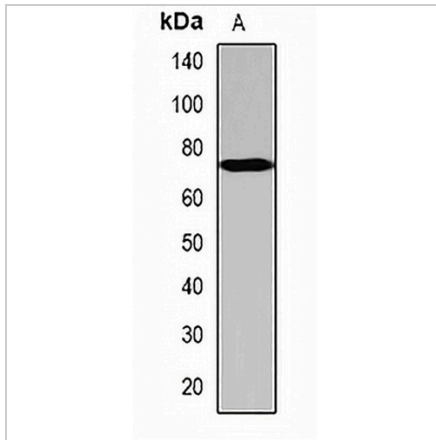
\*Clone Number, Reactivity, Source/Host and Clonality can be found in the product name and Key Features section above.

**DATASHEET**

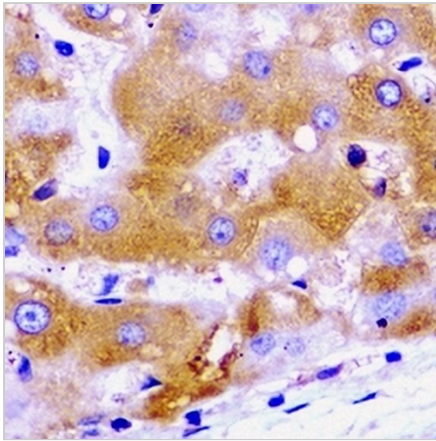
**SCYL1 Rabbit Polyclonal Antibody**

CAT. NO. APA12978

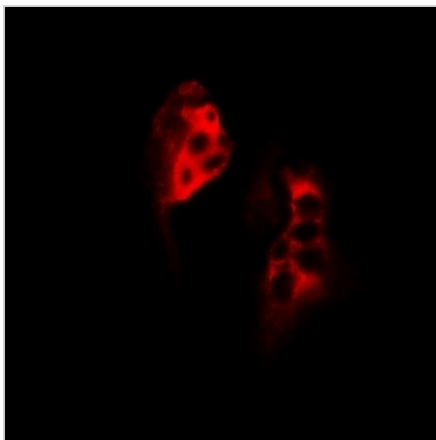
**DATA**



Western blot analysis of SCYL1 expression in HeLa (A) whole cell lysates. (Predicted band size: 69; 78; 86; 88; 89 kD; Observed band size: 70 kD)



Immunohistochemical analysis of SCYL1 staining in human liver cancer formalin fixed paraffin embedded tissue section. The section was pre-treated using heat mediated antigen retrieval with sodium citrate buffer (pH 6.0). The section was then incubated with the antibody at room temperature and detected using an HRP conjugated compact polymer system. DAB was used as the chromogen. The section was then counterstained with haematoxylin and mounted with DPX.



Immunofluorescent analysis of SCYL1 staining in MCF7 cells. Formalin-fixed cells were permeabilized with 0.1% Triton X-100 in TBS for 5-10 minutes and blocked with 3% BSA-PBS for 30 minutes at room temperature. Cells were probed with the primary antibody in 3% BSA-PBS and incubated overnight at 4 °C in a humidified chamber. Cells were washed with PBST and incubated with a DyLight 594-conjugated secondary antibody (red) in PBS at room temperature in the dark.

**STORAGE**

Store at 4°C short term. For long term storage, store at -20°C, avoiding freeze/thaw cycles.

**NOTE**

For Research Use Only. Not for diagnostic, therapeutics, prophylactic or in vivo use.