

DATASHEET

PiT2 Rabbit Polyclonal Antibody

CAT. NO. APA12980

KEY FEATURES

Target	PiT2	Source / Host	Rabbit
Reactivity	Human, Mouse, Rat	Clonality	Polyclonal
Applications	WB	Conjugation	Unconjugated
Form / Buffer	Liquid in 0.42% Potassium phosphate, 0.87% Sodium chloride, pH 7.3, 30% glycerol, and 0.01% sodium azide.		Storage at-20°C

BACKGROUND

Sodium-phosphate symporter which preferentially transports the monovalent form of phosphate with a stoichiometry of two sodium ions per phosphate ion . Plays a critical role in the determination of bone quality and strength by providing phosphate for bone mineralization . Required to maintain normal cerebrospinal fluid phosphate levels . Mediates phosphate-induced calcification of vascular smooth muscle cells (VCMCs) and can functionally compensate for loss of SLC20A1 in VCMCs .

APPLICATION

To ensure optimal assay performance, AREX recommends conducting reagent titration tailored to each testing system for optimal detection results.

WB	1:500 - 1:1000
----	----------------

*Results are sample-specific. Please refer to your local assay conditions and test parameters for reference.

PRODUCT OVERVIEW

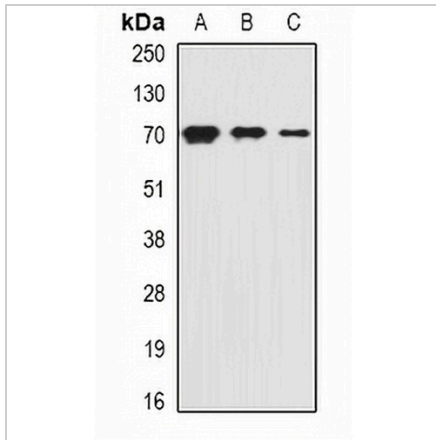
Description	Rabbit polyclonal antibody to PiT2
Specificity	Recognizes endogenous levels of PiT2 protein.
Antibody Type	Primary antibody
Immunogen	Recombinant fusion protein of human PiT2
Purification	The antibody was purified by immunogen affinity chromatography.
Molecular Weight	Predicted: 70 kD; Observed: 70 kD
Form/Buffer	Liquid in 0.42% Potassium phosphate, 0.87% Sodium chloride, pH 7.3, 30% glycerol, and 0.01% sodium azide.
Alternative Names	GLVR2; PIT2; Sodium-dependent phosphate transporter 2; Gibbon ape leukemia virus receptor 2; GLVR-2; Phosphate transporter 2; PiT-2; Pit2; hPit2; Solute carrier family 20 member 2
Gene Symbol	SLC20A2
Entrez Gene	6575(Human)
SwissProt	Q08357(Human)

*AREX continuously optimizes our products. Webpage content may not reflect the latest updates. For inquiries, please contact info@arexbio.com or your local distributor.

*Clone Number, Reactivity, Source/Host and Clonality can be found in the product name and Key Features section above.

DATASHEET**PiT2 Rabbit Polyclonal Antibody**

CAT. NO. APA12980

DATA

Western blot analysis of PiT2 expression in HepG2 (A), mouse kidney (B), rat liver (C) whole cell lysates. (Predicted band size: 70 kD; Observed band size: 70 kD)

STORAGE

Store at 4°C short term. For long term storage, store at -20°C, avoiding freeze/thaw cycles.

NOTE

For Research Use Only. Not for diagnostic, therapeutics, prophylactic or in vivo use.