

DATASHEET

Smoothelin Rabbit Polyclonal Antibody

CAT. NO. APA12981

KEY FEATURES

Target	Smoothelin	Source / Host	Rabbit
Reactivity	Human, Mouse	Clonality	Polyclonal
Applications	WB	Conjugation	Unconjugated
Form / Buffer	Liquid in 0.42% Potassium phosphate, 0.87% Sodium chloride, pH 7.3, 30% glycerol, and 0.01% sodium azide.		Storage at -20°C

BACKGROUND

Structural protein of the cytoskeleton.

APPLICATION

To ensure optimal assay performance, AREX recommends conducting reagent titration tailored to each testing system for optimal detection results.

WB	1:500 - 1:2000
----	----------------

*Results are sample-specific. Please refer to your local assay conditions and test parameters for reference.

PRODUCT OVERVIEW

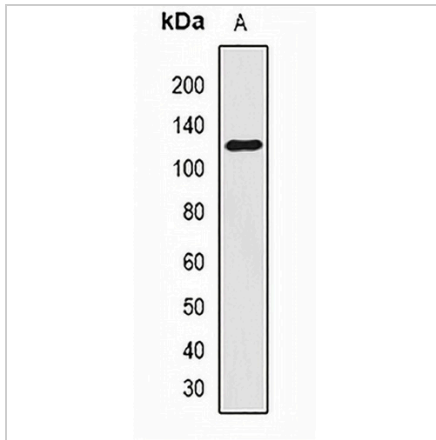
Description	Rabbit polyclonal antibody to Smoothelin
Specificity	Recognizes endogenous levels of Smoothelin protein.
Antibody Type	Primary antibody
Immunogen	Recombinant fusion protein of human Smoothelin
Purification	The antibody was purified by immunogen affinity chromatography.
Molecular Weight	Predicted: 50; Observed: 117 kD
Form/Buffer	Liquid in 0.42% Potassium phosphate, 0.87% Sodium chloride, pH 7.3, 30% glycerol, and 0.01% sodium azide.
Alternative Names	SMSMO; Smoothelin
Gene Symbol	SMTN
Entrez Gene	6525(Human); 29856(Mouse)
SwissProt	P53814(Human); Q921U8(Mouse)

*AREX continuously optimizes our products. Webpage content may not reflect the latest updates. For inquiries, please contact info@arexbio.com or your local distributor.

*Clone Number, Reactivity, Source/Host and Clonality can be found in the product name and Key Features section above.

DATASHEET**Smoothelin Rabbit Polyclonal Antibody**

CAT. NO. APA12981

DATA

Western blot analysis of Smoothelin expression in A375 (A) whole cell lysates. (Predicted band size: 50; 98; 99; 101 kD; Observed band size: 117 kD)

STORAGE

Store at 4°C short term. For long term storage, store at -20°C, avoiding freeze/thaw cycles.

NOTE

For Research Use Only. Not for diagnostic, therapeutics, prophylactic or in vivo use.