

**DATASHEET**

**TAFI110 Rabbit Polyclonal Antibody**

CAT. NO. APA12986

**KEY FEATURES**

Target	TAFI110	Source / Host	Rabbit
Reactivity	Human, Mouse, Rat	Clonality	Polyclonal
Applications	WB, IHC	Conjugation	Unconjugated
Form / Buffer	Liquid in 0.42% Potassium phosphate, 0.87% Sodium chloride, pH 7.3, 30% glycerol, and 0.01% sodium azide.		Storage at -20°C

**BACKGROUND**

Component of the transcription factor SL1/TIF-IB complex, which is involved in the assembly of the PIC (pre-initiation complex) during RNA polymerase I-dependent transcription. The rate of PIC formation probably is primarily dependent on the rate of association of SL1/TIF-IB with the rDNA promoter. SL1/TIF-IB is involved in stabilization of nucleolar transcription factor 1/UBTF on rDNA. Formation of SL1/TIF-IB excludes the association of TBP with TFIID subunits. Recruits RNA polymerase I to the rRNA gene promoter via interaction with RRN3.

**APPLICATION**

To ensure optimal assay performance, AREX recommends conducting reagent titration tailored to each testing system for optimal detection results.

WB	1:500 - 1:2000
IHC	1:50 - 1:200

\*Results are sample-specific. Please refer to your local assay conditions and test parameters for reference.

**PRODUCT OVERVIEW**

Description	Rabbit polyclonal antibody to TAFI110
Specificity	Recognizes endogenous levels of TAFI110 protein.
Antibody Type	Primary antibody
Immunogen	Recombinant fusion protein of human TAFI110
Purification	The antibody was purified by immunogen affinity chromatography.
Molecular Weight	Predicted: 49; Observed: 110 kD
Form/Buffer	Liquid in 0.42% Potassium phosphate, 0.87% Sodium chloride, pH 7.3, 30% glycerol, and 0.01% sodium azide.
Alternative Names	TATA box-binding protein-associated factor RNA polymerase I subunit C; RNA polymerase I-specific TBP-associated factor 110 kDa; TAFI110; TATA box-binding protein-associated factor 1C; TBP-associated factor 1C; Transcription initiation factor SL1/TIF-IB subunit C
Gene Symbol	TAF1C
Entrez Gene	9013(Human); 21341(Mouse); 361420(Rat)
SwissProt	Q15572(Human); Q6PDZ2(Mouse); Q6P773(Rat)

\*AREX continuously optimizes our products. Webpage content may not reflect the latest updates. For inquiries, please contact [info@arexbio.com](mailto:info@arexbio.com) or your local distributor.

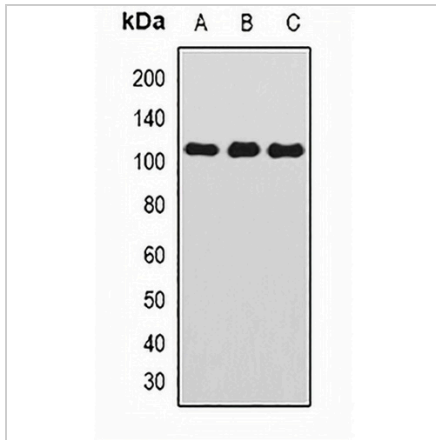
\*Clone Number, Reactivity, Source/Host and Clonality can be found in the product name and Key Features section above.

**DATASHEET**

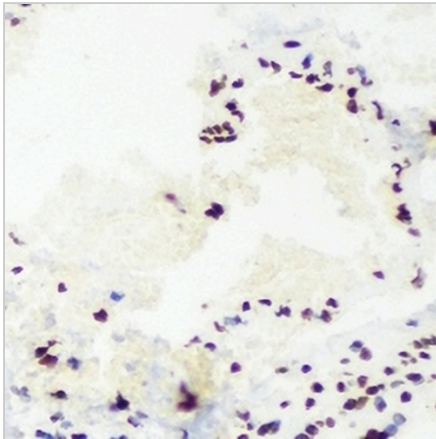
**TAFI110 Rabbit Polyclonal Antibody**

CAT. NO. APA12986

**DATA**



Western blot analysis of TAFI110 expression in HEK293T (A), MCF7 (B), mouse thymus (C) whole cell lysates. (Predicted band size: 49; 58; 84; 92; 95 kD; Observed band size: 110 kD)



Immunohistochemical analysis of TAFI110 staining in mouse lung formalin fixed paraffin embedded tissue section. The section was pre-treated using heat mediated antigen retrieval with sodium citrate buffer (pH 6.0). The section was then incubated with the antibody at room temperature and detected using an HRP conjugated compact polymer system. DAB was used as the chromogen. The section was then counterstained with haematoxylin and mounted with DPX.

**STORAGE**

Store at 4°C short term. For long term storage, store at -20°C, avoiding freeze/thaw cycles.

**NOTE**

For Research Use Only. Not for diagnostic, therapeutics, prophylactic or in vivo use.