

DATASHEET

Tropomodulin-4 Rabbit Polyclonal Antibody

CAT. NO. APA12990

KEY FEATURES

Target	Tropomodulin-4	Source / Host	Rabbit
Reactivity	Human, Mouse, Rat	Clonality	Polyclonal
Applications	WB	Conjugation	Unconjugated
Form / Buffer	Liquid in 0.42% Potassium phosphate, 0.87% Sodium chloride, pH 7.3, 30% glycerol, and 0.01% sodium azide.		Storage at -20°C

BACKGROUND

Blocks the elongation and depolymerization of the actin filaments at the pointed end. The Tmod/TM complex contributes to the formation of the short actin protofilament, which in turn defines the geometry of the membrane skeleton.

APPLICATION

To ensure optimal assay performance, AREX recommends conducting reagent titration tailored to each testing system for optimal detection results.

WB	1:500 - 1:1000
----	----------------

*Results are sample-specific. Please refer to your local assay conditions and test parameters for reference.

PRODUCT OVERVIEW

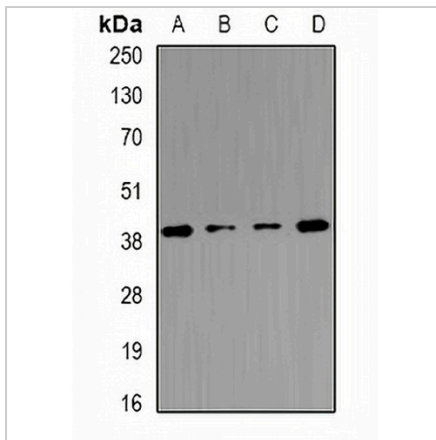
Description	Rabbit polyclonal antibody to Tropomodulin-4
Specificity	Recognizes endogenous levels of Tropomodulin-4 protein.
Antibody Type	Primary antibody
Immunogen	Recombinant fusion protein of human Tropomodulin-4
Purification	The antibody was purified by immunogen affinity chromatography.
Molecular Weight	Predicted: 31; Observed: 39 kD
Form/Buffer	Liquid in 0.42% Potassium phosphate, 0.87% Sodium chloride, pH 7.3, 30% glycerol, and 0.01% sodium azide.
Alternative Names	Tropomodulin-4; Skeletal muscle tropomodulin; Sk-Tmod
Gene Symbol	TMOD4
Entrez Gene	29765(Human); 50874(Mouse)
SwissProt	Q9NZQ9(Human); Q9JLH8(Mouse)

*AREX continuously optimizes our products. Webpage content may not reflect the latest updates. For inquiries, please contact info@arexbio.com or your local distributor.

*Clone Number, Reactivity, Source/Host and Clonality can be found in the product name and Key Features section above.

DATASHEET**Tropomodulin-4 Rabbit Polyclonal Antibody**

CAT. NO. APA12990

DATA

Western blot analysis of Tropomodulin-4 expression in mouse heart (A), mouse skeletal muscle (B), mouse brain (C), rat skeletal muscle (D) whole cell lysates. (Predicted band size: 31; 39 kD; Observed band size: 39 kD)

STORAGE

Store at 4°C short term. For long term storage, store at -20°C, avoiding freeze/thaw cycles.

NOTE

For Research Use Only. Not for diagnostic, therapeutics, prophylactic or in vivo use.