

**DATASHEET**

**ACT1 Rabbit Polyclonal Antibody**

CAT. NO. APA12992

**KEY FEATURES**

Target	ACT1	Source / Host	Rabbit
Reactivity	Human	Clonality	Polyclonal
Applications	WB	Conjugation	Unconjugated
Form / Buffer	Liquid in 0.42% Potassium phosphate, 0.87% Sodium chloride, pH 7.3, 30% glycerol, and 0.01% sodium azide.		Storage at -20°C

**BACKGROUND**

E3 ubiquitin ligase that catalyzes 'Lys-63'-linked polyubiquitination of target protein, enhancing protein-protein interaction and cell signaling . Transfers ubiquitin from E2 ubiquitin-conjugating enzyme UBE2V1-UBE2N to substrate protein . Essential adapter molecule in IL17A-mediated signaling . Upon IL17A stimulation, interacts with IL17RA and IL17RC receptor chains through SEFIR domains and catalyzes 'Lys-63'-linked polyubiquitination of TRAF6, leading to TRAF6-mediated activation of NF-kappa-B and MAPkinase pathways .

**APPLICATION**

To ensure optimal assay performance, AREX recommends conducting reagent titration tailored to each testing system for optimal detection results.

WB	1:500 - 1:1000
----	----------------

\*Results are sample-specific. Please refer to your local assay conditions and test parameters for reference.

**PRODUCT OVERVIEW**

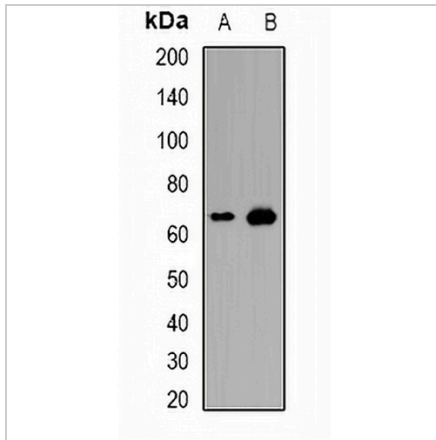
Description	Rabbit polyclonal antibody to ACT1
Specificity	Recognizes endogenous levels of ACT1 protein.
Antibody Type	Primary antibody
Immunogen	Recombinant fusion protein of human ACT1
Purification	The antibody was purified by immunogen affinity chromatography.
Molecular Weight	Predicted: 12; Observed: 64 kD
Form/Buffer	Liquid in 0.42% Potassium phosphate, 0.87% Sodium chloride, pH 7.3, 30% glycerol, and 0.01% sodium azide.
Alternative Names	C6orf2; C6orf4; C6orf5; C6orf6; Adapter protein CIKS; Connection to IKK and SAPK/JNK; Nuclear factor NF-kappa-B activator 1; ACT1; TRAF3-interacting protein 2
Gene Symbol	TRAF3IP2
Entrez Gene	10758(Human)
SwissProt	O43734(Human)

\*AREX continuously optimizes our products. Webpage content may not reflect the latest updates. For inquiries, please contact [info@arexbio.com](mailto:info@arexbio.com) or your local distributor.

\*Clone Number, Reactivity, Source/Host and Clonality can be found in the product name and Key Features section above.

**DATASHEET****ACT1 Rabbit Polyclonal Antibody**

CAT. NO. APA12992

**DATA**

Western blot analysis of ACT1 expression in MCF7 (A), HepG2 (B) whole cell lysates. (Predicted band size: 12; 18; 63; 64 kD; Observed band size: 64 kD)

**STORAGE**

Store at 4°C short term. For long term storage, store at -20°C, avoiding freeze/thaw cycles.

**NOTE**

For Research Use Only. Not for diagnostic, therapeutics, prophylactic or in vivo use.