

DATASHEET

TREX1 Rabbit Polyclonal Antibody

CAT. NO. APA12993

KEY FEATURES

Target	TREX1	Source / Host	Rabbit
Reactivity	Human, Mouse	Clonality	Polyclonal
Applications	WB, IF/ICC	Conjugation	Unconjugated
Form / Buffer	Liquid in 0.42% Potassium phosphate, 0.87% Sodium chloride, pH 7.3, 30% glycerol, and 0.01% sodium azide.		Storage at -20°C

BACKGROUND

Major cellular 3'-to-5' DNA exonuclease which digests single-stranded DNA (ssDNA) and double-stranded DNA (dsDNA) with mismatched 3' termini and double-stranded DNA (dsDNA) with mismatched 3' termini . Prevents cell-intrinsic initiation of autoimmunity . Acts by metabolizing DNA fragments from endogenous retroelements, including L1, LTR and SINE elements . Plays a key role in degradation of DNA fragments at cytosolic micronuclei arising from genome instability: its association with the endoplasmic reticulum membrane directs TREX1 to ruptured micronuclei, leading to micronuclear DNA degradation . Micronuclear DNA degradation is required to limit CGAS activation and subsequent inflammation .

APPLICATION

To ensure optimal assay performance, AREX recommends conducting reagent titration tailored to each testing system for optimal detection results.

WB	1:500 - 1:1000
IF/ICC	1:50 - 1:200

*Results are sample-specific. Please refer to your local assay conditions and test parameters for reference.

PRODUCT OVERVIEW

Description	Rabbit polyclonal antibody to TREX1
Specificity	Recognizes endogenous levels of TREX1 protein.
Antibody Type	Primary antibody
Immunogen	Recombinant fusion protein of human TREX1
Purification	The antibody was purified by immunogen affinity chromatography.
Molecular Weight	Predicted: 32; Observed: 38 kD
Form/Buffer	Liquid in 0.42% Potassium phosphate, 0.87% Sodium chloride, pH 7.3, 30% glycerol, and 0.01% sodium azide.
Alternative Names	Three-prime repair exonuclease 1; 3'-5' exonuclease TREX1; DNase III
Gene Symbol	TREX1
Entrez Gene	11277(Human); 22040(Mouse)
SwissProt	Q9NSU2(Human); Q91XB0(Mouse)

*AREX continuously optimizes our products. Webpage content may not reflect the latest updates. For inquiries, please contact info@arexbio.com or your local distributor.

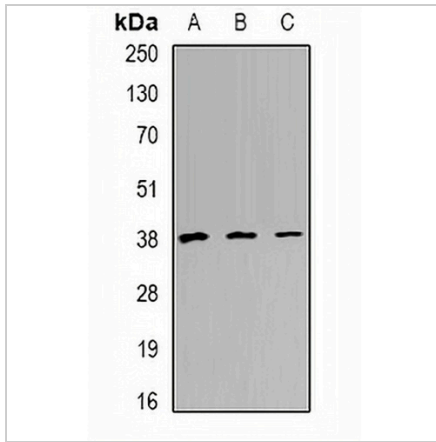
*Clone Number, Reactivity, Source/Host and Clonality can be found in the product name and Key Features section above.

DATASHEET

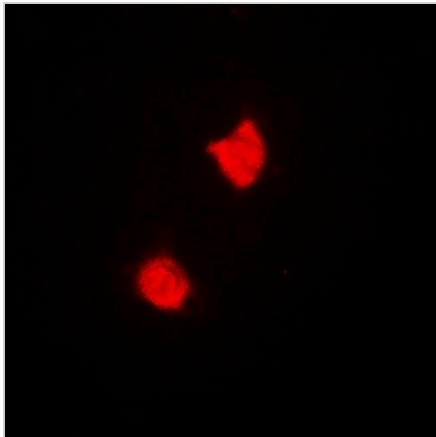
TREX1 Rabbit Polyclonal Antibody

CAT. NO. APA12993

DATA



Western blot analysis of TREX1 expression in HeLa (A), Raji (B), mouse heart (C) whole cell lysates. (Predicted band size: 32; 33; 38 kD; Observed band size: 38 kD)



Immunofluorescent analysis of TREX1 staining in A549 cells. Formalin-fixed cells were permeabilized with 0.1% Triton X-100 in TBS for 5-10 minutes and blocked with 3% BSA-PBS for 30 minutes at room temperature. Cells were probed with the primary antibody in 3% BSA-PBS and incubated overnight at 4 °C in a humidified chamber. Cells were washed with PBST and incubated with a DyLight 594-conjugated secondary antibody (red) in PBS at room temperature in the dark.

STORAGE

Store at 4°C short term. For long term storage, store at -20°C, avoiding freeze/thaw cycles.

NOTE

For Research Use Only. Not for diagnostic, therapeutics, prophylactic or in vivo use.