

DATASHEET

15-LO2 Rabbit Polyclonal Antibody

CAT. NO. APA13000

KEY FEATURES

Target	15-LO2	Source / Host	Rabbit
Reactivity	Human, Mouse, Rat	Clonality	Polyclonal
Applications	WB, IF/ICC	Conjugation	Unconjugated
Form / Buffer	Liquid in 0.42% Potassium phosphate, 0.87% Sodium chloride, pH 7.3, 30% glycerol, and 0.01% sodium azide.		Storage at -20°C

BACKGROUND

Non-heme iron-containing dioxygenase that catalyzes the stereo-specific peroxidation of free and esterified polyunsaturated fatty acids (PUFAs) generating a spectrum of bioactive lipid mediators (Probable) generating a spectrum of bioactive lipid mediators (Probable) . It inserts peroxy groups at C15 of arachidonate ((5Z,8Z,11Z,14Z)-eicosatetraenoate) producing (15S)-hydroperoxyeicosatetraenoate/(15S)-HPETE (Probable) . Also peroxidizes linoleate ((9Z,12Z)-octadecadienoate) to 13-hydroperoxyoctadecadienoate/13-HPODE (Probable) . Oxygenates arachidonyl derivatives such as 2-arachidonoylglycerol (2-AG) leading to the production and extracellular release of 15-hydroxyeicosatetraenoyl glycerol (15-HETE-G) that acts as a peroxisome proliferator-activated receptor alpha agonist .

APPLICATION

To ensure optimal assay performance, AREX recommends conducting reagent titration tailored to each testing system for optimal detection results.

WB	1:500 - 1:1000
IF/ICC	1:50 - 1:200

*Results are sample-specific. Please refer to your local assay conditions and test parameters for reference.

PRODUCT OVERVIEW

Description	Rabbit polyclonal antibody to 15-LO2
Specificity	Recognizes endogenous levels of 15-LO2 protein.
Antibody Type	Primary antibody
Immunogen	Recombinant fusion protein of human 15-LO2
Purification	The antibody was purified by immunogen affinity chromatography.
Molecular Weight	Predicted: 67; Observed: 69 kD
Form/Buffer	Liquid in 0.42% Potassium phosphate, 0.87% Sodium chloride, pH 7.3, 30% glycerol, and 0.01% sodium azide.
Alternative Names	Arachidonate 15-lipoxygenase B; 15-LOX-B; 15-lipoxygenase 2; 15-LOX-2; Arachidonate 15-lipoxygenase type II; Linoleate 13-lipoxygenase 15-LOb
Gene Symbol	ALOX15B
Entrez Gene	247(Human)
SwissProt	O15296(Human)

*AREX continuously optimizes our products. Webpage content may not reflect the latest updates. For inquiries, please contact info@arexbio.com or your local distributor.

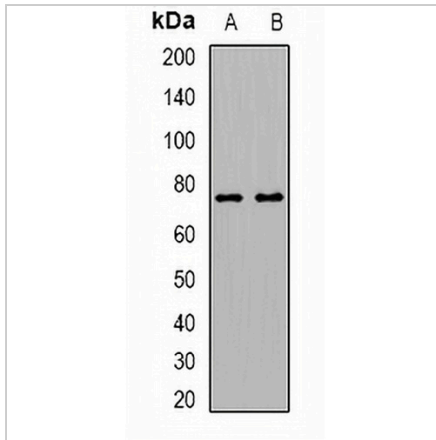
*Clone Number, Reactivity, Source/Host and Clonality can be found in the product name and Key Features section above.

DATASHEET

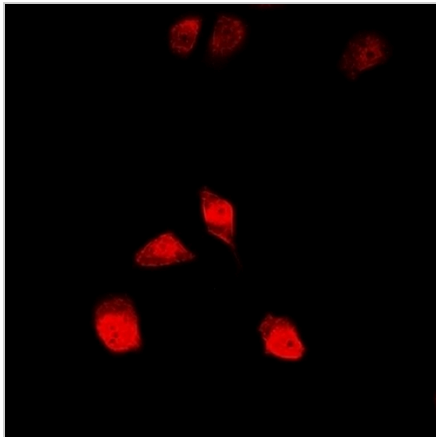
15-LO2 Rabbit Polyclonal Antibody

CAT. NO. APA13000

DATA



Western blot analysis of 15-LO2 expression in HL60 (A), mouse ovary (B) whole cell lysates. (Predicted band size: 67; 69; 72; 75 kD; Observed band size: 69 kD)



Immunofluorescent analysis of 15-LO2 staining in HeLa cells. Formalin-fixed cells were permeabilized with 0.1% Triton X-100 in TBS for 5-10 minutes and blocked with 3% BSA-PBS for 30 minutes at room temperature. Cells were probed with the primary antibody in 3% BSA-PBS and incubated overnight at 4 °C in a humidified chamber. Cells were washed with PBST and incubated with a DyLight 594-conjugated secondary antibody (red) in PBS at room temperature in the dark.

STORAGE

Store at 4°C short term. For long term storage, store at -20°C, avoiding freeze/thaw cycles.

NOTE

For Research Use Only. Not for diagnostic, therapeutics, prophylactic or in vivo use.