

## DATASHEET

# AMY1 Rabbit Polyclonal Antibody

CAT. NO. APA13001

### KEY FEATURES

Target	AMY1	Source / Host	Rabbit
Reactivity	Human, Mouse, Rat	Clonality	Polyclonal
Applications	WB	Conjugation	Unconjugated
Form / Buffer	Liquid in 0.42% Potassium phosphate, 0.87% Sodium chloride, pH 7.3, 30% glycerol, and 0.01% sodium azide.		Storage at -20°C

### BACKGROUND

Calcium-binding enzyme that initiates starch digestion in the oral cavity . Catalyzes the hydrolysis of internal (1->4)-alpha-D-glucosidic bonds, yielding a mixture of maltose, isomaltose, small amounts of glucose as well as small linear and branched oligosaccharides called dextrans .

### APPLICATION

To ensure optimal assay performance, AREX recommends conducting reagent titration tailored to each testing system for optimal detection results.

WB	1:500 - 1:1000
----	----------------

\*Results are sample-specific. Please refer to your local assay conditions and test parameters for reference.

### PRODUCT OVERVIEW

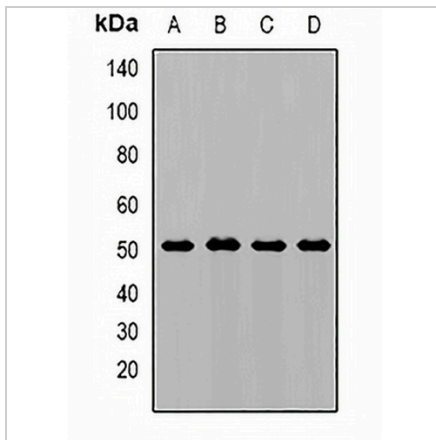
Description	Rabbit polyclonal antibody to AMY1
Specificity	Recognizes endogenous levels of AMY1 protein.
Antibody Type	Primary antibody
Immunogen	Recombinant fusion protein of human AMY1
Purification	The antibody was purified by immunogen affinity chromatography.
Molecular Weight	Predicted: 57 kD; Observed: 50 kD
Form/Buffer	Liquid in 0.42% Potassium phosphate, 0.87% Sodium chloride, pH 7.3, 30% glycerol, and 0.01% sodium azide.
Alternative Names	AMY1; Alpha-amylase 1; 1,4-alpha-D-glucon gluconohydrolase 1; Salivary alpha-amylase
Gene Symbol	AMY1A; AMY1B; AMY1C
Entrez Gene	276; 277; 278(Human); 11722(Mouse)
SwissProt	P04745(Human); P00687(Mouse)

\*AREX continuously optimizes our products. Webpage content may not reflect the latest updates. For inquiries, please contact [info@arexbio.com](mailto:info@arexbio.com) or your local distributor.

\*Clone Number, Reactivity, Source/Host and Clonality can be found in the product name and Key Features section above.

**DATASHEET****AMY1 Rabbit Polyclonal Antibody**

CAT. NO. APA13001

**DATA**

Western blot analysis of AMY1 expression in SKOV3 (A), mouse liver (B), mouse pancreas (C), rat heart (D) whole cell lysates. (Predicted band size: 57 kD; Observed band size: 50 kD)

**STORAGE**

Store at 4°C short term. For long term storage, store at -20°C, avoiding freeze/thaw cycles.

**NOTE**

For Research Use Only. Not for diagnostic, therapeutics, prophylactic or in vivo use.