

DATASHEET

DACH1 Rabbit Polyclonal Antibody

CAT. NO. APA13003

KEY FEATURES

Target	DACH1	Source / Host	Rabbit
Reactivity	Mouse, Rat	Clonality	Polyclonal
Applications	WB	Conjugation	Unconjugated
Form / Buffer	Liquid in 0.42% Potassium phosphate, 0.87% Sodium chloride, pH 7.3, 30% glycerol, and 0.01% sodium azide.		Storage at -20°C

BACKGROUND

Transcription factor that is involved in regulation of organogenesis. Seems to be a regulator of SIX1, SIX6 and probably SIX5. Corepression of precursor cell proliferation in myoblasts by SIX1 is switched to coactivation through recruitment of EYA3 to the SIX1-DACH1 complex. Transcriptional activation also seems to involve association of CREBBP. Seems to act as a corepressor of SIX6 in regulating proliferation by directly repressing cyclin-dependent kinase inhibitors, including the p27Kip1 promoter . Inhibits TGF-beta signaling through interaction with SMAD4 and NCOR1. Binds to chromatin DNA via its DACHbox-N domain .

APPLICATION

To ensure optimal assay performance, AREX recommends conducting reagent titration tailored to each testing system for optimal detection results.

WB	1:500 - 1:1000
----	----------------

*Results are sample-specific. Please refer to your local assay conditions and test parameters for reference.

PRODUCT OVERVIEW

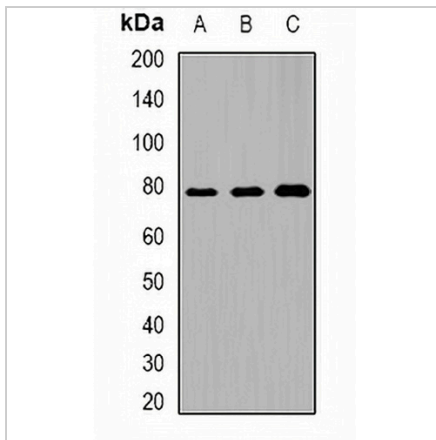
Description	Rabbit polyclonal antibody to DACH1
Specificity	Recognizes endogenous levels of DACH1 protein.
Antibody Type	Primary antibody
Immunogen	Recombinant fusion protein of human DACH1
Purification	The antibody was purified by immunogen affinity chromatography.
Molecular Weight	Predicted: 52; Observed: 75 kD
Form/Buffer	Liquid in 0.42% Potassium phosphate, 0.87% Sodium chloride, pH 7.3, 30% glycerol, and 0.01% sodium azide.
Alternative Names	DACH; Dachshund homolog 1; Dach1
Gene Symbol	DACH1
Entrez Gene	1602(Human); 13134(Mouse)
SwissProt	Q9UI36(Human); Q9QYB2(Mouse)

*AREX continuously optimizes our products. Webpage content may not reflect the latest updates. For inquiries, please contact info@arexbio.com or your local distributor.

*Clone Number, Reactivity, Source/Host and Clonality can be found in the product name and Key Features section above.

DATASHEET**DACH1 Rabbit Polyclonal Antibody**

CAT. NO. APA13003

DATA

Western blot analysis of DACH1 expression in mouse lung (A), mouse heart (B), rat kidney (C) whole cell lysates. (Predicted band size: 52; 57; 73; 78 kD; Observed band size: 75 kD)

STORAGE

Store at 4°C short term. For long term storage, store at -20°C, avoiding freeze/thaw cycles.

NOTE

For Research Use Only. Not for diagnostic, therapeutics, prophylactic or in vivo use.