

DATASHEET

GPI Rabbit Polyclonal Antibody

CAT. NO. APA13010

KEY FEATURES

Target	GPI	Source / Host	Rabbit
Reactivity	Human, Mouse, Rat	Clonality	Polyclonal
Applications	WB, IHC, IF/ICC	Conjugation	Unconjugated
Form / Buffer	Liquid in 0.42% Potassium phosphate, 0.87% Sodium chloride, pH 7.3, 30% glycerol, and 0.01% sodium azide.		Storage at -20°C

BACKGROUND

Isomerase that catalyzes the conversion of alpha-D-glucose-6-phosphate to beta-D-fructose-6-phosphate, the second step in glycolysis, and the reverse reaction in gluconeogenesis, within the cytoplasm . Also shows C2-epimerase activity, interconverting D-glucose-6-phosphate (G6P) and D-mannose-6-phosphate (M6P) . Also displays anomerase activity, interconverting alpha and beta-anomeric forms of G6P, D-fructose-6-phosphate and M6P . In addition to its metabolic role, this enzyme functions extracellularly as a cytokine: acts as autocrine motility factor (AMF), a secreted angiogenic factor that enhances endothelial cell motility . Functions as neuroleukin, a neurotrophic factor supporting the survival of spinal and sensory neurons .

APPLICATION

To ensure optimal assay performance, AREX recommends conducting reagent titration tailored to each testing system for optimal detection results.

WB	1:500 - 1:2000
IHC	1:50 - 1:100
IF/ICC	1:50 - 1:100

*Results are sample-specific. Please refer to your local assay conditions and test parameters for reference.

PRODUCT OVERVIEW

Description	Rabbit polyclonal antibody to GPI
Specificity	Recognizes endogenous levels of GPI protein.
Antibody Type	Primary antibody
Immunogen	Recombinant fusion protein of human GPI
Purification	The antibody was purified by immunogen affinity chromatography.
Molecular Weight	Predicted: 63; Observed: 56 kD
Form/Buffer	Liquid in 0.42% Potassium phosphate, 0.87% Sodium chloride, pH 7.3, 30% glycerol, and 0.01% sodium azide.
Alternative Names	Glucose-6-phosphate isomerase; GPI; Autocrine motility factor; AMF; Neuroleukin; NLK; Phosphoglucose isomerase; PGI; Phosphohexose isomerase; PHI; Sperm antigen 36; SA-36
Gene Symbol	GPI
Entrez Gene	2821(Human); 14751(Mouse); 292804(Rat)
SwissProt	P06744(Human); P06745(Mouse); Q6P6V0(Rat)

*AREX continuously optimizes our products. Webpage content may not reflect the latest updates. For inquiries, please contact info@arexbio.com or your local distributor.

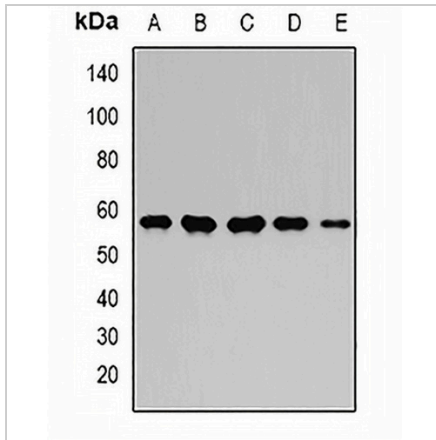
*Clone Number, Reactivity, Source/Host and Clonality can be found in the product name and Key Features section above.

DATASHEET

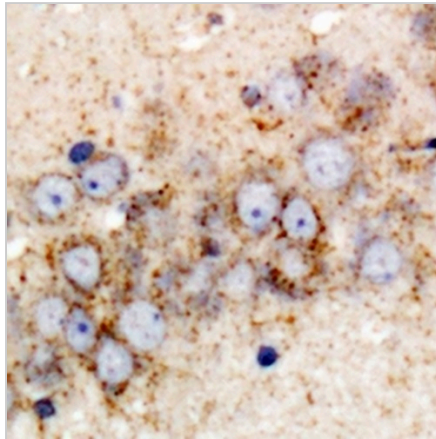
GPI Rabbit Polyclonal Antibody

CAT. NO. APA13010

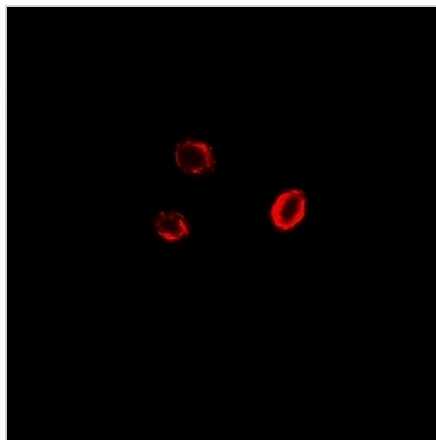
DATA



Western blot analysis of GPI expression in MCF7 (A), HeLa (B), mouse kidney (C), mouse heart (D), rat brain (E) whole cell lysates. (Predicted band size: 63; 64 kD; Observed band size: 56 kD)



Immunohistochemical analysis of GPI staining in rat brain formalin fixed paraffin embedded tissue section. The section was pre-treated using heat mediated antigen retrieval with sodium citrate buffer (pH 6.0). The section was then incubated with the antibody at room temperature and detected using an HRP conjugated compact polymer system. DAB was used as the chromogen. The section was then counterstained with haematoxylin and mounted with DPX.



Immunofluorescent analysis of GPI staining in U2OS cells. Formalin-fixed cells were permeabilized with 0.1% Triton X-100 in TBS for 5-10 minutes and blocked with 3% BSA-PBS for 30 minutes at room temperature. Cells were probed with the primary antibody in 3% BSA-PBS and incubated overnight at 4 °C in a humidified chamber. Cells were washed with PBST and incubated with a DyLight 594-conjugated secondary antibody (red) in PBS at room temperature in the dark.

STORAGE

Store at 4°C short term. For long term storage, store at -20°C, avoiding freeze/thaw cycles.

NOTE

For Research Use Only. Not for diagnostic, therapeutics, prophylactic or in vivo use.