

DATASHEET

PDE6-beta Rabbit Polyclonal Antibody

CAT. NO. APA13015

KEY FEATURES

Target	PDE6-beta	Source / Host	Rabbit
Reactivity	Human, Mouse, Rat	Clonality	Polyclonal
Applications	WB, IHC	Conjugation	Unconjugated
Form / Buffer	Liquid in 0.42% Potassium phosphate, 0.87% Sodium chloride, pH 7.3, 30% glycerol, and 0.01% sodium azide.		Storage at -20°C

BACKGROUND

Rod-specific cGMP phosphodiesterase that catalyzes the hydrolysis of 3',5'-cyclic GMP . Necessary for the formation of a functional phosphodiesterase holoenzyme . Involved in retinal circadian rhythm photoentrainment via modulation of UVA and orange light-induced phase-shift of the retina clock . May participate in processes of transmission and amplification of the visual signal .

APPLICATION

To ensure optimal assay performance, AREX recommends conducting reagent titration tailored to each testing system for optimal detection results.

WB	1:500 - 1:2000
IHC	1:50 - 1:200

*Results are sample-specific. Please refer to your local assay conditions and test parameters for reference.

PRODUCT OVERVIEW

Description	Rabbit polyclonal antibody to PDE6-beta
Specificity	Recognizes endogenous levels of PDE6-beta protein.
Antibody Type	Primary antibody
Immunogen	Recombinant fusion protein of human PDE6-beta
Purification	The antibody was purified by immunogen affinity chromatography.
Molecular Weight	Predicted: 66; Observed: 98 kD
Form/Buffer	Liquid in 0.42% Potassium phosphate, 0.87% Sodium chloride, pH 7.3, 30% glycerol, and 0.01% sodium azide.
Alternative Names	PDEB; Rod cGMP-specific 3',5'-cyclic phosphodiesterase subunit beta; GMP-PDE beta
Gene Symbol	PDE6B
Entrez Gene	5158(Human); 18587(Mouse)
SwissProt	P35913(Human); P23440(Mouse)

*AREX continuously optimizes our products. Webpage content may not reflect the latest updates. For inquiries, please contact info@arexbio.com or your local distributor.

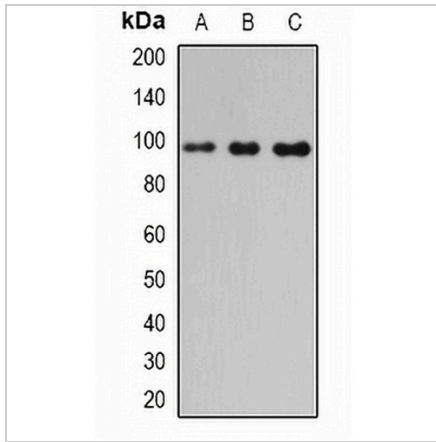
*Clone Number, Reactivity, Source/Host and Clonality can be found in the product name and Key Features section above.

DATASHEET

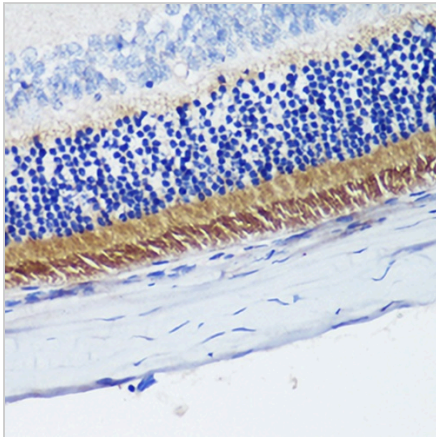
PDE6-beta Rabbit Polyclonal Antibody

CAT. NO. APA13015

DATA



Western blot analysis of PDE6-beta expression in mouse pancreas (A), mouse heart (B), rat liver (C) whole cell lysates. (Predicted band size: 66; 98 kD; Observed band size: 98 kD)



Immunohistochemical analysis of PDE6-beta staining in rat retina formalin fixed paraffin embedded tissue section. The section was pre-treated using heat mediated antigen retrieval with sodium citrate buffer (pH 6.0). The section was then incubated with the antibody at room temperature and detected using an HRP conjugated compact polymer system. DAB was used as the chromogen. The section was then counterstained with haematoxylin and mounted with DPX.

STORAGE

Store at 4°C short term. For long term storage, store at -20°C, avoiding freeze/thaw cycles.

NOTE

For Research Use Only. Not for diagnostic, therapeutics, prophylactic or in vivo use.