

DATASHEET

NELF-E Rabbit Polyclonal Antibody

CAT. NO. APA13026

KEY FEATURES

Target	NELF-E	Source / Host	Rabbit
Reactivity	Human, Mouse	Clonality	Polyclonal
Applications	WB, IF/ICC	Conjugation	Unconjugated
Form / Buffer	Liquid in 0.42% Potassium phosphate, 0.87% Sodium chloride, pH 7.3, 30% glycerol, and 0.01% sodium azide.		Storage at-20°C

BACKGROUND

Essential component of the NELF complex, a complex that negatively regulates the elongation of transcription by RNA polymerase II . The NELF complex, which acts via an association with the DSIF complex and causes transcriptional pausing, is counteracted by the P-TEFb kinase complex . Provides the strongest RNA binding activity of the NELF complex and may initially recruit the NELF complex to RNA .

APPLICATION

To ensure optimal assay performance, AREX recommends conducting reagent titration tailored to each testing system for optimal detection results.

WB	1:500 - 1:1000
IF/ICC	1:50 - 1:200

*Results are sample-specific. Please refer to your local assay conditions and test parameters for reference.

PRODUCT OVERVIEW

Description	Rabbit polyclonal antibody to NELF-E
Specificity	Recognizes endogenous levels of NELF-E protein.
Antibody Type	Primary antibody
Immunogen	Recombinant fusion protein of human NELF-E
Purification	The antibody was purified by immunogen affinity chromatography.
Molecular Weight	Predicted: 40; Observed: 43 kD
Form/Buffer	Liquid in 0.42% Potassium phosphate, 0.87% Sodium chloride, pH 7.3, 30% glycerol, and 0.01% sodium azide.
Alternative Names	RD; RDBP; Negative elongation factor E; NELF-E; RNA-binding protein RD
Gene Symbol	NELFE
Entrez Gene	7936(Human); 27632(Mouse)
SwissProt	P18615(Human); P19426(Mouse)

*AREX continuously optimizes our products. Webpage content may not reflect the latest updates. For inquiries, please contact info@arexbio.com or your local distributor.

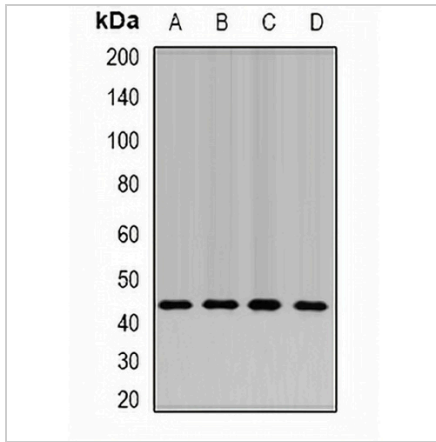
*Clone Number, Reactivity, Source/Host and Clonality can be found in the product name and Key Features section above.

DATASHEET

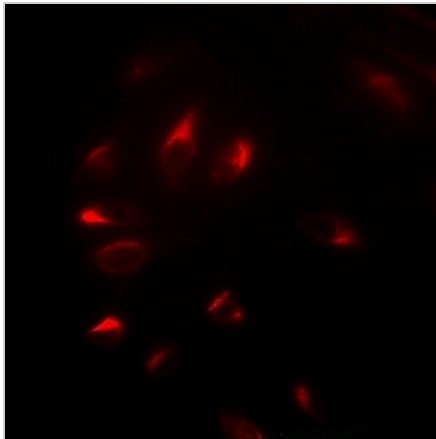
NELF-E Rabbit Polyclonal Antibody

CAT. NO. APA13026

DATA



Western blot analysis of NELF-E expression in SW620 (A), HeLa (B), mouse liver (C), mouse testis (D) whole cell lysates. (Predicted band size: 40; 43 kD; Observed band size: 43 kD)



Immunofluorescent analysis of NELF-E staining in U2OS cells. Formalin-fixed cells were permeabilized with 0.1% Triton X-100 in TBS for 5-10 minutes and blocked with 3% BSA-PBS for 30 minutes at room temperature. Cells were probed with the primary antibody in 3% BSA-PBS and incubated overnight at 4 °C in a humidified chamber. Cells were washed with PBST and incubated with a DyLight 594-conjugated secondary antibody (red) in PBS at room temperature in the dark.

STORAGE

Store at 4°C short term. For long term storage, store at -20°C, avoiding freeze/thaw cycles.

NOTE

For Research Use Only. Not for diagnostic, therapeutics, prophylactic or in vivo use.