

DATASHEET

FKBP6 Rabbit Polyclonal Antibody

CAT. NO. APA13027

KEY FEATURES

| | | | |
|---------------|---|---------------|---------------------|
| Target | FKBP6 | Source / Host | Rabbit |
| Reactivity | Human, Mouse, Rat | Clonality | Polyclonal |
| Applications | WB, IF/ICC | Conjugation | Unconjugated |
| Form / Buffer | Liquid in 0.42% Potassium phosphate, 0.87% Sodium chloride, pH 7.3, 30% glycerol, and 0.01% sodium azide. | | Storage at -20°C |

BACKGROUND

Has an essential role in spermatogenesis . It is required to repress transposable elements and prevent their mobilization, which is essential for the germline integrity . Acts via the piRNA metabolic process, which mediates the repression of transposable elements during meiosis by forming complexes composed of piRNAs and Piwi proteins and govern the methylation and subsequent repression of transposons . Acts as a co-chaperone via its interaction with HSP90 and is required for the piRNA amplification process, the secondary piRNA biogenesis . May be required together with HSP90 in removal of 16 nucleotide ping-pong by-products from Piwi complexes, possibly facilitating turnover of Piwi complexes .

APPLICATION

To ensure optimal assay performance, AREX recommends conducting reagent titration tailored to each testing system for optimal detection results.

| | |
|--------|----------------|
| WB | 1:500 - 1:1000 |
| IF/ICC | 1:50 - 1:200 |

*Results are sample-specific. Please refer to your local assay conditions and test parameters for reference.

PRODUCT OVERVIEW

| | |
|-------------------|---|
| Description | Rabbit polyclonal antibody to FKBP6 |
| Specificity | Recognizes endogenous levels of FKBP6 protein. |
| Antibody Type | Primary antibody |
| Immunogen | Recombinant fusion protein of human FKBP6 |
| Purification | The antibody was purified by immunogen affinity chromatography. |
| Molecular Weight | Predicted: 33; Observed: 37 kD |
| Form/Buffer | Liquid in 0.42% Potassium phosphate, 0.87% Sodium chloride, pH 7.3, 30% glycerol, and 0.01% sodium azide. |
| Alternative Names | FKBP36; Inactive peptidyl-prolyl cis-trans isomerase FKBP6; Inactive PPIase FKBP6; 36 kDa FK506-binding protein; 36 kDa FKBP; FKBP-36; FK506-binding protein 6; FKBP-6; Immunophilin FKBP36 |
| Gene Symbol | FKBP6 |
| Entrez Gene | 8468(Human); 94244(Mouse); 288597(Rat) |
| SwissProt | O75344(Human); Q91XW8(Mouse); D3ZQF4(Rat) |

*AREX continuously optimizes our products. Webpage content may not reflect the latest updates. For inquiries, please contact info@arexbio.com or your local distributor.

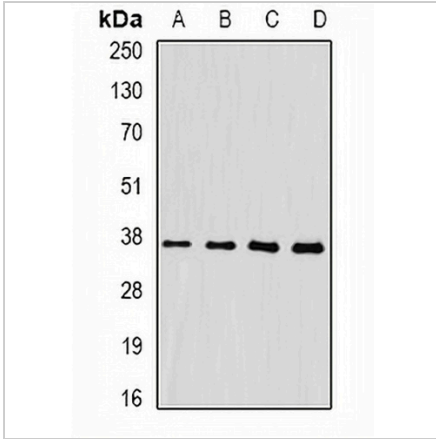
*Clone Number, Reactivity, Source/Host and Clonality can be found in the product name and Key Features section above.

DATASHEET

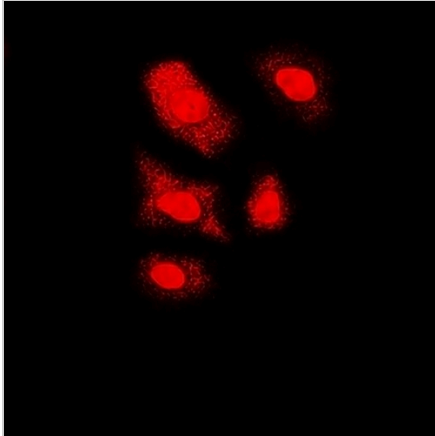
FKBP6 Rabbit Polyclonal Antibody

CAT. NO. APA13027

DATA



Western blot analysis of FKBP6 expression in HepG2 (A), mouse heart (B), mouse liver (C), rat testis (D) whole cell lysates. (Predicted band size: 33; 36; 37 kD; Observed band size: 37 kD)



Immunofluorescent analysis of FKBP6 staining in U2OS cells. Formalin-fixed cells were permeabilized with 0.1% Triton X-100 in TBS for 5-10 minutes and blocked with 3% BSA-PBS for 30 minutes at room temperature. Cells were probed with the primary antibody in 3% BSA-PBS and incubated overnight at 4 °C in a humidified chamber. Cells were washed with PBST and incubated with a DyLight 594-conjugated secondary antibody (red) in PBS at room temperature in the dark.

STORAGE

Store at 4°C short term. For long term storage, store at -20°C, avoiding freeze/thaw cycles.

NOTE

For Research Use Only. Not for diagnostic, therapeutics, prophylactic or in vivo use.