

**DATASHEET**

**Gastric Lipase Rabbit Polyclonal Antibody**

CAT. NO. APA13028

**KEY FEATURES**

Target	Gastric Lipase	Source / Host	Rabbit
Reactivity	Human, Mouse, Rat	Clonality	Polyclonal
Applications	WB	Conjugation	Unconjugated
Form / Buffer	Liquid in 0.42% Potassium phosphate, 0.87% Sodium chloride, pH 7.3, 30% glycerol, and 0.01% sodium azide.	Storage	at-20°C

**BACKGROUND**

Catalyzes the hydrolysis of triacylglycerols to yield free fatty acids, diacylglycerol, monoacylglycerol, and glycerol . Shows a preferential hydrolysis at the sn-3 position of triacylglycerol .

**APPLICATION**

To ensure optimal assay performance, AREX recommends conducting reagent titration tailored to each testing system for optimal detection results.

WB	1:500 - 1:2000
----	----------------

\*Results are sample-specific. Please refer to your local assay conditions and test parameters for reference.

**PRODUCT OVERVIEW**

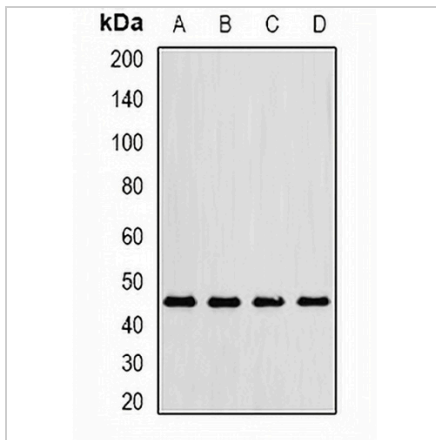
Description	Rabbit polyclonal antibody to Gastric Lipase
Specificity	Recognizes endogenous levels of Gastric Lipase protein.
Antibody Type	Primary antibody
Immunogen	Recombinant fusion protein of human Gastric Lipase
Purification	The antibody was purified by immunogen affinity chromatography.
Molecular Weight	Predicted: 41; Observed: 45 kD
Form/Buffer	Liquid in 0.42% Potassium phosphate, 0.87% Sodium chloride, pH 7.3, 30% glycerol, and 0.01% sodium azide.
Alternative Names	Gastric triacylglycerol lipase; GL; Gastric lipase
Gene Symbol	LIPF
Entrez Gene	8513(Human); 67717(Mouse); 50682(Rat)
SwissProt	P07098(Human); Q9CPP7(Mouse); P04634(Rat)

\*AREX continuously optimizes our products. Webpage content may not reflect the latest updates. For inquiries, please contact [info@arexbio.com](mailto:info@arexbio.com) or your local distributor.

\*Clone Number, Reactivity, Source/Host and Clonality can be found in the product name and Key Features section above.

**DATASHEET****Gastric Lipase Rabbit Polyclonal Antibody**

CAT. NO. APA13028

**DATA**

Western blot analysis of Gastric Lipase expression in MCF7 (A), mouse lung (B), mouse liver (C), rat kidney (D) whole cell lysates. (Predicted band size: 41; 42; 45; 46 kD; Observed band size: 45 kD)

**STORAGE**

Store at 4°C short term. For long term storage, store at -20°C, avoiding freeze/thaw cycles.

**NOTE**

For Research Use Only. Not for diagnostic, therapeutics, prophylactic or in vivo use.