

**DATASHEET**

**AP3-beta-1 Rabbit Polyclonal Antibody**

CAT. NO. APA13029

**KEY FEATURES**

Target	AP3-beta-1	Source / Host	Rabbit
Reactivity	Human, Mouse	Clonality	Polyclonal
Applications	WB	Conjugation	Unconjugated
Form / Buffer	Liquid in 0.42% Potassium phosphate, 0.87% Sodium chloride, pH 7.3, 30% glycerol, and 0.01% sodium azide.		Storage at-20°C

**BACKGROUND**

Subunit of non-clathrin- and clathrin-associated adaptor protein complex 3 (AP-3) that plays a role in protein sorting in the late-Golgi/trans-Golgi network (TGN) and/or endosomes. The AP complexes mediate both the recruitment of clathrin to membranes and the recognition of sorting signals within the cytosolic tails of transmembrane cargo molecules. AP-3 appears to be involved in the sorting of a subset of transmembrane proteins targeted to lysosomes and lysosome-related organelles. In concert with the BLOC-1 complex, AP-3 is required to target cargos into vesicles assembled at cell bodies for delivery into neurites and nerve terminals.

**APPLICATION**

To ensure optimal assay performance, AREX recommends conducting reagent titration tailored to each testing system for optimal detection results.

WB	1:500 - 1:2000
----	----------------

\*Results are sample-specific. Please refer to your local assay conditions and test parameters for reference.

**PRODUCT OVERVIEW**

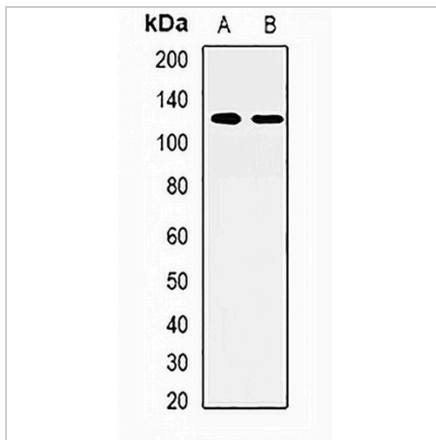
Description	Rabbit polyclonal antibody to AP3-beta-1
Specificity	Recognizes endogenous levels of AP3-beta-1 protein.
Antibody Type	Primary antibody
Immunogen	Recombinant fusion protein of human AP3-beta-1
Purification	The antibody was purified by immunogen affinity chromatography.
Molecular Weight	Predicted: 121 kD; Observed: 121 kD
Form/Buffer	Liquid in 0.42% Potassium phosphate, 0.87% Sodium chloride, pH 7.3, 30% glycerol, and 0.01% sodium azide.
Alternative Names	ADTB3A; AP-3 complex subunit beta-1; Adapter-related protein complex 3 subunit beta-1; Adaptor protein complex AP-3 subunit beta-1; Beta-3A-adaptin; Clathrin assembly protein complex 3 beta-1 large chain
Gene Symbol	AP3B1
Entrez Gene	8546(Human); 11774(Mouse)
SwissProt	O00203(Human); Q9Z1T1(Mouse)

\*AREX continuously optimizes our products. Webpage content may not reflect the latest updates. For inquiries, please contact [info@arexbio.com](mailto:info@arexbio.com) or your local distributor.

\*Clone Number, Reactivity, Source/Host and Clonality can be found in the product name and Key Features section above.

**DATASHEET****AP3-beta-1 Rabbit Polyclonal Antibody**

CAT. NO. APA13029

**DATA**

Western blot analysis of AP3-beta-1 expression in SKOV3 (A), mouse liver (B) whole cell lysates. (Predicted band size: 121 kD; Observed band size: 121 kD)

**STORAGE**

Store at 4°C short term. For long term storage, store at -20°C, avoiding freeze/thaw cycles.

**NOTE**

For Research Use Only. Not for diagnostic, therapeutics, prophylactic or in vivo use.