

DATASHEET

eIF3H Rabbit Polyclonal Antibody

CAT. NO. APA13032

KEY FEATURES

Target	eIF3H	Source / Host	Rabbit
Reactivity	Human, Mouse, Rat	Clonality	Polyclonal
Applications	WB, IHC, IP	Conjugation	Unconjugated
Form / Buffer	Liquid in 0.42% Potassium phosphate, 0.87% Sodium chloride, pH 7.3, 30% glycerol, and 0.01% sodium azide.		Storage at -20°C

BACKGROUND

Component of the eukaryotic translation initiation factor 3 (eIF-3) complex, which is required for several steps in the initiation of protein synthesis complex, which is required for several steps in the initiation of protein synthesis. The eIF-3 complex associates with the 40S ribosome and facilitates the recruitment of eIF-1, eIF-1A, eIF-2:GTP:methionyl-tRNA_i and eIF-5 to form the 43S pre-initiation complex (43S PIC). The eIF-3 complex stimulates mRNA recruitment to the 43S PIC and scanning of the mRNA for AUG recognition. The eIF-3 complex is also required for disassembly and recycling of post-termination ribosomal complexes and subsequently prevents premature joining of the 40S and 60S ribosomal subunits prior to initiation.

APPLICATION

To ensure optimal assay performance, AREX recommends conducting reagent titration tailored to each testing system for optimal detection results.

WB	1:500 - 1:1000
IHC	1:50 - 1:200
IP	1:10 - 1:50

*Results are sample-specific. Please refer to your local assay conditions and test parameters for reference.

PRODUCT OVERVIEW

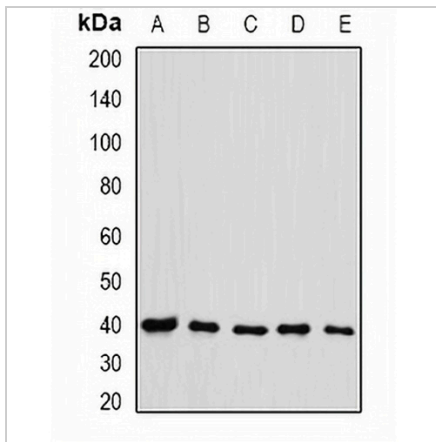
Description	Rabbit polyclonal antibody to eIF3H
Specificity	Recognizes endogenous levels of eIF3H protein.
Antibody Type	Primary antibody
Immunogen	Recombinant fusion protein of human eIF3H
Purification	The antibody was purified by immunogen affinity chromatography.
Molecular Weight	Predicted: 39 kD; Observed: 40 kD
Form/Buffer	Liquid in 0.42% Potassium phosphate, 0.87% Sodium chloride, pH 7.3, 30% glycerol, and 0.01% sodium azide.
Alternative Names	EIF3S3; Eukaryotic translation initiation factor 3 subunit H; eIF3h; Eukaryotic translation initiation factor 3 subunit 3; eIF-3-gamma; eIF3 p40 subunit
Gene Symbol	EIF3H
Entrez Gene	8667(Human); 68135(Mouse); 100911110; 299899(Rat)
SwissProt	O15372(Human); Q91WK2(Mouse); Q6P9U8(Rat)

*AREX continuously optimizes our products. Webpage content may not reflect the latest updates. For inquiries, please contact info@arexbio.com or your local distributor.

*Clone Number, Reactivity, Source/Host and Clonality can be found in the product name and Key Features section above.

DATASHEET**eIF3H Rabbit Polyclonal Antibody**

CAT. NO. APA13032

DATA

Western blot analysis of eIF3H expression in HL60 (A), HT29 (B), NIH3T3 (C), mouse testis (D), rat spleen (E) whole cell lysates. (Predicted band size: 39 kD; Observed band size: 40 kD)

STORAGE

Store at 4°C short term. For long term storage, store at -20°C, avoiding freeze/thaw cycles.

NOTE

For Research Use Only. Not for diagnostic, therapeutics, prophylactic or in vivo use.