

DATASHEET

CIP4 Rabbit Polyclonal Antibody

CAT. NO. APA13036

KEY FEATURES

Target	CIP4	Source / Host	Rabbit
Reactivity	Human, Mouse	Clonality	Polyclonal
Applications	WB, IF/ICC	Conjugation	Unconjugated
Form / Buffer	Liquid in 0.42% Potassium phosphate, 0.87% Sodium chloride, pH 7.3, 30% glycerol, and 0.01% sodium azide.		Storage at -20°C

BACKGROUND

Required for translocation of GLUT4 to the plasma membrane in response to insulin signaling . Required to coordinate membrane tubulation with reorganization of the actin cytoskeleton during endocytosis. Binds to lipids such as phosphatidylinositol 4,5-bisphosphate and phosphatidylserine and promotes membrane invagination and the formation of tubules. Also promotes CDC42-induced actin polymerization by recruiting WASL/N-WASP which in turn activates the Arp2/3 complex. Actin polymerization may promote the fission of membrane tubules to form endocytic vesicles. Required for the formation of podosomes, actin-rich adhesion structures specific to monocyte-derived cells. May be required for the lysosomal retention of FASLG/FASL.

APPLICATION

To ensure optimal assay performance, AREX recommends conducting reagent titration tailored to each testing system for optimal detection results.

WB	1:500 - 1:2000
IF/ICC	1:50 - 1:100

*Results are sample-specific. Please refer to your local assay conditions and test parameters for reference.

PRODUCT OVERVIEW

Description	Rabbit polyclonal antibody to CIP4
Specificity	Recognizes endogenous levels of CIP4 protein.
Antibody Type	Primary antibody
Immunogen	Recombinant fusion protein of human CIP4
Purification	The antibody was purified by immunogen affinity chromatography.
Molecular Weight	Predicted: 39; Observed: 90 kD
Form/Buffer	Liquid in 0.42% Potassium phosphate, 0.87% Sodium chloride, pH 7.3, 30% glycerol, and 0.01% sodium azide.
Alternative Names	CIP4; STOT; STP; Cdc42-interacting protein 4; Protein Felic; Salt tolerant protein; hSTP; Thyroid receptor-interacting protein 10; TR-interacting protein 10; TRIP-10
Gene Symbol	TRIP10
Entrez Gene	9322(Human); 106628(Mouse)
SwissProt	Q15642(Human); Q8CJ53(Mouse)

*AREX continuously optimizes our products. Webpage content may not reflect the latest updates. For inquiries, please contact info@arexbio.com or your local distributor.

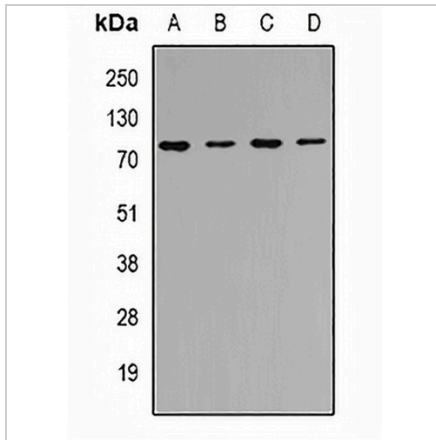
*Clone Number, Reactivity, Source/Host and Clonality can be found in the product name and Key Features section above.

DATASHEET

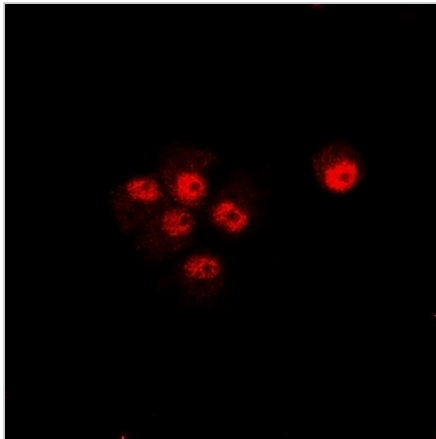
CIP4 Rabbit Polyclonal Antibody

CAT. NO. APA13036

DATA



Western blot analysis of CIP4 expression in HeLa (A), SKOV3 (B), mouse kidney (C), mouse heart (D) whole cell lysates. (Predicted band size: 39; 52; 62; 67; 68 kD; Observed band size: 90 kD)



Immunofluorescent analysis of CIP4 staining in U2OS cells. Formalin-fixed cells were permeabilized with 0.1% Triton X-100 in TBS for 5-10 minutes and blocked with 3% BSA-PBS for 30 minutes at room temperature. Cells were probed with the primary antibody in 3% BSA-PBS and incubated overnight at 4 °C in a humidified chamber. Cells were washed with PBST and incubated with a DyLight 594-conjugated secondary antibody (red) in PBS at room temperature in the dark.

STORAGE

Store at 4°C short term. For long term storage, store at -20°C, avoiding freeze/thaw cycles.

NOTE

For Research Use Only. Not for diagnostic, therapeutics, prophylactic or in vivo use.