

**DATASHEET**

**Cyclophilin E Rabbit Polyclonal Antibody**

CAT. NO. APA13043

**KEY FEATURES**

Target	Cyclophilin E	Source / Host	Rabbit
Reactivity	Human, Mouse	Clonality	Polyclonal
Applications	WB	Conjugation	Unconjugated
Form / Buffer	Liquid in 0.42% Potassium phosphate, 0.87% Sodium chloride, pH 7.3, 30% glycerol, and 0.01% sodium azide.		Storage at -20°C

**BACKGROUND**

Involved in pre-mRNA splicing as component of the spliceosome . Combines RNA-binding and PPIase activities . Binds mRNA and has a preference for single-stranded RNA molecules with poly-A and poly-U stretches, suggesting it binds to the poly(A)-region in the 3'-UTR of mRNA molecules . Catalyzes the cis-trans isomerization of proline imidic peptide bonds in proteins . Inhibits KMT2A activity; this requires proline isomerase activity .

**APPLICATION**

To ensure optimal assay performance, AREX recommends conducting reagent titration tailored to each testing system for optimal detection results.

WB	1:500 - 1:2000
----	----------------

\*Results are sample-specific. Please refer to your local assay conditions and test parameters for reference.

**PRODUCT OVERVIEW**

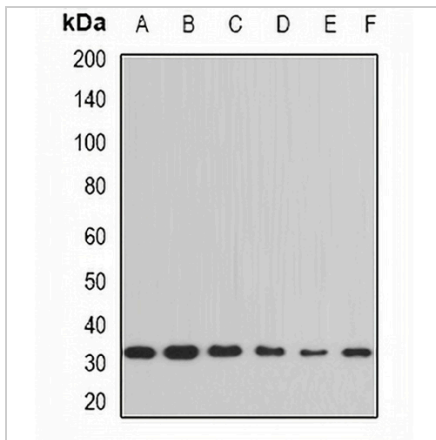
Description	Rabbit polyclonal antibody to Cyclophilin E
Specificity	Recognizes endogenous levels of Cyclophilin E protein.
Antibody Type	Primary antibody
Immunogen	Recombinant fusion protein of human Cyclophilin E
Purification	The antibody was purified by immunogen affinity chromatography.
Molecular Weight	Predicted: 33; Observed: 33 kD
Form/Buffer	Liquid in 0.42% Potassium phosphate, 0.87% Sodium chloride, pH 7.3, 30% glycerol, and 0.01% sodium azide.
Alternative Names	CYP33; Peptidyl-prolyl cis-trans isomerase E; PPIase E; Cyclophilin E; Cyclophilin-33; Rotamase E
Gene Symbol	PPIE
Entrez Gene	10450(Human); 56031(Mouse)
SwissProt	Q9UNP9(Human); Q9QZH3(Mouse)

\*AREX continuously optimizes our products. Webpage content may not reflect the latest updates. For inquiries, please contact [info@arexbio.com](mailto:info@arexbio.com) or your local distributor.

\*Clone Number, Reactivity, Source/Host and Clonality can be found in the product name and Key Features section above.

**DATASHEET****Cyclophilin E Rabbit Polyclonal Antibody**

CAT. NO. APA13043

**DATA**

Western blot analysis of Cyclophilin E expression in HeLa (A), THP1 (B), Jurkat (C), HL60 (D), mouse testis (E), mouse thymus (F) whole cell lysates. (Predicted band size: 33; 34 kD; Observed band size: 33 kD)

**STORAGE**

Store at 4°C short term. For long term storage, store at -20°C, avoiding freeze/thaw cycles.

**NOTE**

For Research Use Only. Not for diagnostic, therapeutics, prophylactic or in vivo use.