

DATASHEET

AGR2 Rabbit Polyclonal Antibody

CAT. NO. APA13045

KEY FEATURES

Target	AGR2	Source / Host	Rabbit
Reactivity	Human, Mouse, Rat	Clonality	Polyclonal
Applications	WB, IHC, IF/ICC	Conjugation	Unconjugated
Form / Buffer	Liquid in 0.42% Potassium phosphate, 0.87% Sodium chloride, pH 7.3, 30% glycerol, and 0.01% sodium azide.	Storage	at-20°C

BACKGROUND

Required for MUC2 post-transcriptional synthesis and secretion. May play a role in the production of mucus by intestinal cells . Proto-oncogene that may play a role in cell migration, cell differentiation and cell growth. Promotes cell adhesion .

APPLICATION

To ensure optimal assay performance, AREX recommends conducting reagent titration tailored to each testing system for optimal detection results.

WB	1:500 - 1:2000
IHC	1:50 - 1:200
IF/ICC	1:50 - 1:200

*Results are sample-specific. Please refer to your local assay conditions and test parameters for reference.

PRODUCT OVERVIEW

Description	Rabbit polyclonal antibody to AGR2
Specificity	Recognizes endogenous levels of AGR2 protein.
Antibody Type	Primary antibody
Immunogen	Recombinant fusion protein of human AGR2
Purification	The antibody was purified by immunogen affinity chromatography.
Molecular Weight	Predicted: 19 kD; Observed: 20 kD
Form/Buffer	Liquid in 0.42% Potassium phosphate, 0.87% Sodium chloride, pH 7.3, 30% glycerol, and 0.01% sodium azide.
Alternative Names	AG2; Anterior gradient protein 2 homolog; AG-2; hAG-2; HPC8; Secreted cement gland protein XAG-2 homolog
Gene Symbol	AGR2
Entrez Gene	10551(Human); 23795(Mouse)
SwissProt	O95994(Human); O88312(Mouse)

*AREX continuously optimizes our products. Webpage content may not reflect the latest updates. For inquiries, please contact info@arexbio.com or your local distributor.

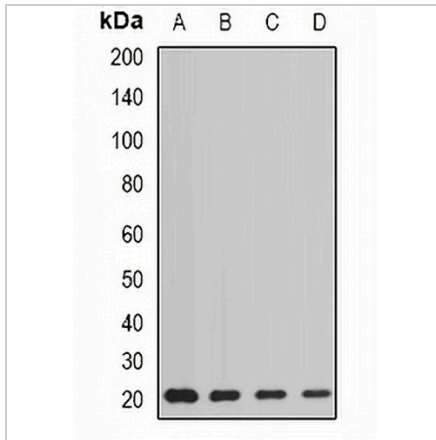
*Clone Number, Reactivity, Source/Host and Clonality can be found in the product name and Key Features section above.

DATASHEET

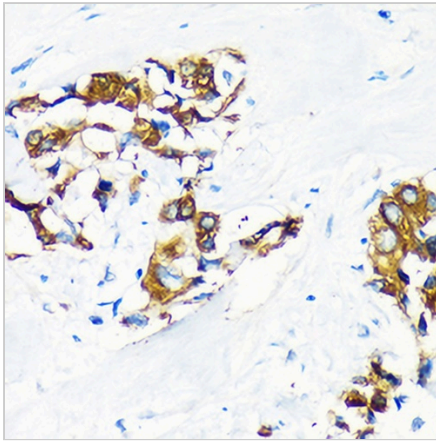
AGR2 Rabbit Polyclonal Antibody

CAT. NO. APA13045

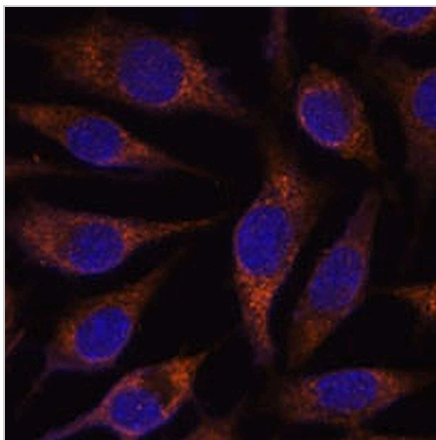
DATA



Western blot analysis of AGR2 expression in HT29 (A), MCF7 (B), mouse liver (C), rat lung (D) whole cell lysates. (Predicted band size: 19 kD; Observed band size: 20 kD)



Immunohistochemical analysis of AGR2 staining in human lung cancer formalin fixed paraffin embedded tissue section. The section was pre-treated using heat mediated antigen retrieval with sodium citrate buffer (pH 6.0). The section was then incubated with the antibody at room temperature and detected using an HRP conjugated compact polymer system. DAB was used as the chromogen. The section was then counterstained with haematoxylin and mounted with DPX.



Immunofluorescent analysis of AGR2 staining in L929 cells. Formalin-fixed cells were permeabilized with 0.1% Triton X-100 in TBS for 5-10 minutes and blocked with 3% BSA-PBS for 30 minutes at room temperature. Cells were probed with the primary antibody in 3% BSA-PBS and incubated overnight at 4 °C in a humidified chamber. Cells were washed with PBST and incubated with a AREX® Fluor 594-conjugated secondary antibody (red) in PBS at room temperature in the dark. DAPI was used to stain the cell nuclei (blue).

STORAGE

Store at 4°C short term. For long term storage, store at -20°C, avoiding freeze/thaw cycles.

NOTE

For Research Use Only. Not for diagnostic, therapeutics, prophylactic or in vivo use.