

**DATASHEET**

**STAMBP Rabbit Polyclonal Antibody**

CAT. NO. APA13046

**KEY FEATURES**

Target	STAMBP	Source / Host	Rabbit
Reactivity	Human, Mouse, Rat	Clonality	Polyclonal
Applications	WB, IHC, IF/ICC	Conjugation	Unconjugated
Form / Buffer	Liquid in 0.42% Potassium phosphate, 0.87% Sodium chloride, pH 7.3, 30% glycerol, and 0.01% sodium azide.		Storage at -20°C

**BACKGROUND**

Zinc metalloprotease that specifically cleaves 'Lys-63'-linked polyubiquitin chains . Does not cleave 'Lys-48'-linked polyubiquitin chains . Plays a role in signal transduction for cell growth and MYC induction mediated by IL-2 and GM-CSF . Potentiates BMP (bone morphogenetic protein) signaling by antagonizing the inhibitory action of SMAD6 and SMAD7 . Has a key role in regulation of cell surface receptor-mediated endocytosis and ubiquitin-dependent sorting of receptors to lysosomes . Endosomal localization of STAMBP is required for efficient EGFR degradation but not for its internalization . Involved in the negative regulation of PI3K-AKT-mTOR and RAS-MAP signaling pathways .

**APPLICATION**

To ensure optimal assay performance, AREX recommends conducting reagent titration tailored to each testing system for optimal detection results.

WB	1:500 - 1:2000
IHC	1:50 - 1:200
IF/ICC	1:50 - 1:100

\*Results are sample-specific. Please refer to your local assay conditions and test parameters for reference.

**PRODUCT OVERVIEW**

Description	Rabbit polyclonal antibody to STAMBP
Specificity	Recognizes endogenous levels of STAMBP protein.
Antibody Type	Primary antibody
Immunogen	Recombinant fusion protein of human STAMBP
Purification	The antibody was purified by immunogen affinity chromatography.
Molecular Weight	Predicted: 39; Observed: 48 kD
Form/Buffer	Liquid in 0.42% Potassium phosphate, 0.87% Sodium chloride, pH 7.3, 30% glycerol, and 0.01% sodium azide.
Alternative Names	AMSH; STAM-binding protein; Associated molecule with the SH3 domain of STAM; Endosome-associated ubiquitin isopeptidase
Gene Symbol	STAMBP
Entrez Gene	10617(Human); 70527(Mouse); 171565(Rat)
SwissProt	O95630(Human); Q9CQ26(Mouse); Q8R424(Rat)

\*AREX continuously optimizes our products. Webpage content may not reflect the latest updates. For inquiries, please contact [info@arexbio.com](mailto:info@arexbio.com) or your local distributor.

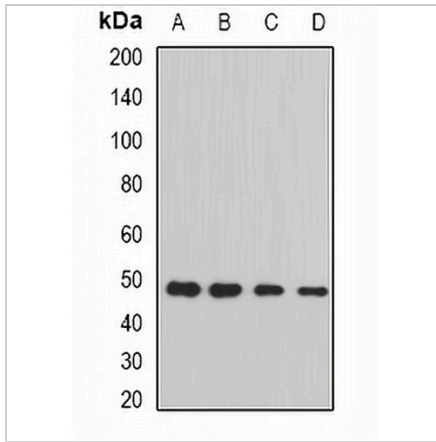
\*Clone Number, Reactivity, Source/Host and Clonality can be found in the product name and Key Features section above.

**DATASHEET**

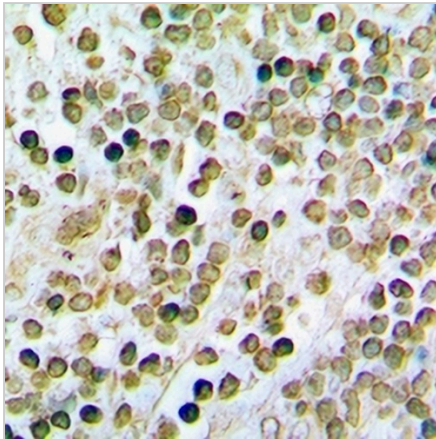
**STAMPB Rabbit Polyclonal Antibody**

CAT. NO. APA13046

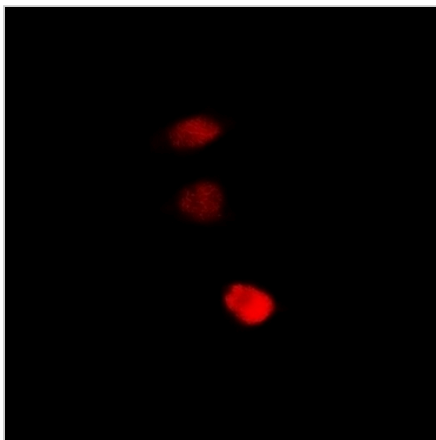
**DATA**



Western blot analysis of STAMPB expression in HepG2 (A), HeLa (B), mouse brain (C), rat lung (D) whole cell lysates. (Predicted band size: 39; 48 kD; Observed band size: 48 kD)



Immunohistochemical analysis of STAMPB staining in rat spleen formalin fixed paraffin embedded tissue section. The section was pre-treated using heat mediated antigen retrieval with sodium citrate buffer (pH 6.0). The section was then incubated with the antibody at room temperature and detected using an HRP conjugated compact polymer system. DAB was used as the chromogen. The section was then counterstained with haematoxylin and mounted with DPX.



Immunofluorescent analysis of STAMPB staining in U2OS cells. Formalin-fixed cells were permeabilized with 0.1% Triton X-100 in TBS for 5-10 minutes and blocked with 3% BSA-PBS for 30 minutes at room temperature. Cells were probed with the primary antibody in 3% BSA-PBS and incubated overnight at 4 °C in a humidified chamber. Cells were washed with PBST and incubated with a DyLight 594-conjugated secondary antibody (red) in PBS at room temperature in the dark.

**STORAGE**

Store at 4°C short term. For long term storage, store at -20°C, avoiding freeze/thaw cycles.

**NOTE**

For Research Use Only. Not for diagnostic, therapeutics, prophylactic or in vivo use.