

DATASHEET

ALDH1L1 Rabbit Polyclonal Antibody

CAT. NO. APA13047

KEY FEATURES

Target	ALDH1L1	Source / Host	Rabbit
Reactivity	Human, Mouse, Rat	Clonality	Polyclonal
Applications	WB, IHC	Conjugation	Unconjugated
Form / Buffer	Liquid in 0.42% Potassium phosphate, 0.87% Sodium chloride, pH 7.3, 30% glycerol, and 0.01% sodium azide.		Storage at -20°C

BACKGROUND

Cytosolic 10-formyltetrahydrofolate dehydrogenase that catalyzes the NADP(+)-dependent conversion of 10-formyltetrahydrofolate to tetrahydrofolate and carbon dioxide -dependent conversion of 10-formyltetrahydrofolate to tetrahydrofolate and carbon dioxide . May also have an NADP(+)-dependent aldehyde dehydrogenase activity towards formaldehyde, acetaldehyde, propionaldehyde, and benzaldehyde .

APPLICATION

To ensure optimal assay performance, AREX recommends conducting reagent titration tailored to each testing system for optimal detection results.

WB	1:500 - 1:2000
IHC	1:50 - 1:200

*Results are sample-specific. Please refer to your local assay conditions and test parameters for reference.

PRODUCT OVERVIEW

Description	Rabbit polyclonal antibody to ALDH1L1
Specificity	Recognizes endogenous levels of ALDH1L1 protein.
Antibody Type	Primary antibody
Immunogen	Recombinant fusion protein of human ALDH1L1
Purification	The antibody was purified by immunogen affinity chromatography.
Molecular Weight	Predicted: 98 kD; Observed: 98 kD
Form/Buffer	Liquid in 0.42% Potassium phosphate, 0.87% Sodium chloride, pH 7.3, 30% glycerol, and 0.01% sodium azide.
Alternative Names	FTHFD; Cytosolic 10-formyltetrahydrofolate dehydrogenase; 10-FTHFDH; FDH; Aldehyde dehydrogenase family 1 member L1
Gene Symbol	ALDH1L1
Entrez Gene	10840(Human); 107747(Mouse); 64392(Rat)
SwissProt	O75891(Human); Q8R0Y6(Mouse); P28037(Rat)

*AREX continuously optimizes our products. Webpage content may not reflect the latest updates. For inquiries, please contact info@arex.bio or your local distributor.

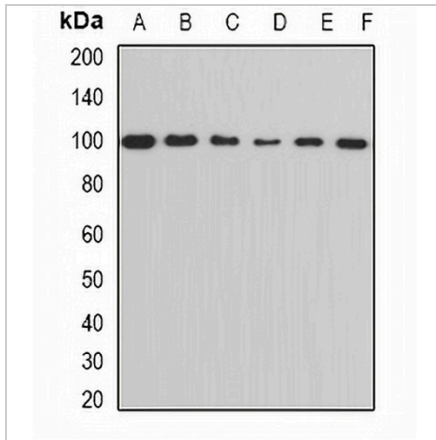
*Clone Number, Reactivity, Source/Host and Clonality can be found in the product name and Key Features section above.

DATASHEET

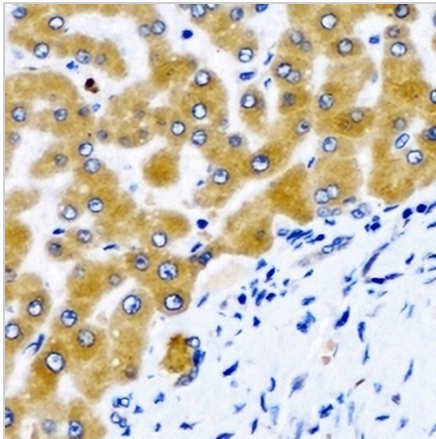
ALDH1L1 Rabbit Polyclonal Antibody

CAT. NO. APA13047

DATA



Western blot analysis of ALDH1L1 expression in MCF7 (A), Jurkat (B), mouse heart (C), mouse kidney (D), rat brain (E), rat liver (F) whole cell lysates. (Predicted band size: 98 kD; Observed band size: 98 kD)



Immunohistochemical analysis of ALDH1L1 staining in human liver cancer formalin fixed paraffin embedded tissue section. The section was pre-treated using heat mediated antigen retrieval with sodium citrate buffer (pH 6.0). The section was then incubated with the antibody at room temperature and detected using an HRP conjugated compact polymer system. DAB was used as the chromogen. The section was then counterstained with haematoxylin and mounted with DPX.

STORAGE

Store at 4°C short term. For long term storage, store at -20°C, avoiding freeze/thaw cycles.

NOTE

For Research Use Only. Not for diagnostic, therapeutics, prophylactic or in vivo use.