

DATASHEET

MTF-2 Rabbit Polyclonal Antibody

CAT. NO. APA13049

KEY FEATURES

Target	MTF-2	Source / Host	Rabbit
Reactivity	Human, Mouse, Rat	Clonality	Polyclonal
Applications	WB	Conjugation	Unconjugated
Form / Buffer	Liquid in 0.42% Potassium phosphate, 0.87% Sodium chloride, pH 7.3, 30% glycerol, and 0.01% sodium azide.		Storage at-20°C

BACKGROUND

Polycomb group (PcG) protein that specifically binds histone H3 trimethylated at 'Lys-36' (H3K36me3) and recruits the PRC2 complex, thus enhancing PRC2 H3K27me3 methylation activity protein that specifically binds histone H3 trimethylated at 'Lys-36' (H3K36me3) and recruits the PRC2 complex, thus enhancing PRC2 H3K27me3 methylation activity . Regulates the transcriptional networks during embryonic stem cell self-renewal and differentiation . Promotes recruitment of the PRC2 complex to the inactive X chromosome in differentiating XX ES cells and PRC2 recruitment to target genes in undifferentiated ES cells . Required to repress Hox genes by enhancing H3K27me3 methylation of the PRC2 complex .

APPLICATION

To ensure optimal assay performance, AREX recommends conducting reagent titration tailored to each testing system for optimal detection results.

WB	1:500 - 1:1000
----	----------------

*Results are sample-specific. Please refer to your local assay conditions and test parameters for reference.

PRODUCT OVERVIEW

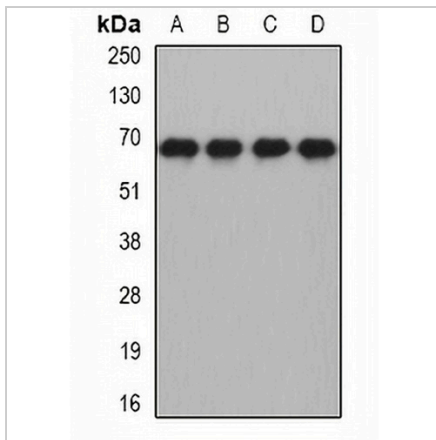
Description	Rabbit polyclonal antibody to MTF-2
Specificity	Recognizes endogenous levels of MTF-2 protein.
Antibody Type	Primary antibody
Immunogen	Recombinant fusion protein of human MTF-2
Purification	The antibody was purified by immunogen affinity chromatography.
Molecular Weight	Predicted: 29; Observed: 67 kD
Form/Buffer	Liquid in 0.42% Potassium phosphate, 0.87% Sodium chloride, pH 7.3, 30% glycerol, and 0.01% sodium azide.
Alternative Names	PCL2; Metal-response element-binding transcription factor 2; Metal regulatory transcription factor 2; Metal-response element DNA-binding protein M96; Polycomb-like protein 2; hPCI2
Gene Symbol	MTF2
Entrez Gene	22823(Human); 17765(Mouse)
SwissProt	Q9Y483(Human); Q02395(Mouse)

*AREX continuously optimizes our products. Webpage content may not reflect the latest updates. For inquiries, please contact info@arexbio.com or your local distributor.

*Clone Number, Reactivity, Source/Host and Clonality can be found in the product name and Key Features section above.

DATASHEET**MTF-2 Rabbit Polyclonal Antibody**

CAT. NO. APA13049

DATA

Western blot analysis of MTF-2 expression in HL60 (A), HepG2 (B), mouse brain (C), rat brain (D) whole cell lysates. (Predicted band size: 29; 55; 60; 67 kD; Observed band size: 67 kD)

STORAGE

Store at 4°C short term. For long term storage, store at -20°C, avoiding freeze/thaw cycles.

NOTE

For Research Use Only. Not for diagnostic, therapeutics, prophylactic or in vivo use.