

**DATASHEET**

**NFU1 Rabbit Polyclonal Antibody**

CAT. NO. APA13050

**KEY FEATURES**

Target	NFU1	Source / Host	Rabbit
Reactivity	Human, Mouse, Rat	Clonality	Polyclonal
Applications	WB	Conjugation	Unconjugated
Form / Buffer	Liquid in 0.42% Potassium phosphate, 0.87% Sodium chloride, pH 7.3, 30% glycerol, and 0.01% sodium azide.		Storage at -20°C

**BACKGROUND**

Iron-sulfur cluster scaffold protein which can assemble [4Fe-4S] clusters and deliver them to target proteins.

**APPLICATION**

To ensure optimal assay performance, AREX recommends conducting reagent titration tailored to each testing system for optimal detection results.

WB	1:500 - 1:1000
----	----------------

\*Results are sample-specific. Please refer to your local assay conditions and test parameters for reference.

**PRODUCT OVERVIEW**

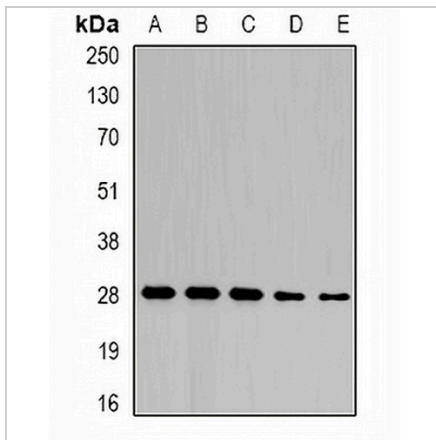
Description	Rabbit polyclonal antibody to NFU1
Specificity	Recognizes endogenous levels of NFU1 protein.
Antibody Type	Primary antibody
Immunogen	Recombinant fusion protein of human NFU1
Purification	The antibody was purified by immunogen affinity chromatography.
Molecular Weight	Predicted: 12; Observed: 25-28 kD
Form/Buffer	Liquid in 0.42% Potassium phosphate, 0.87% Sodium chloride, pH 7.3, 30% glycerol, and 0.01% sodium azide.
Alternative Names	HIRIP5; NFU1 iron-sulfur cluster scaffold homolog mitochondrial; HIRA-interacting protein 5
Gene Symbol	NFU1
Entrez Gene	27247(Human); 56748(Mouse)
SwissProt	Q9UMS0(Human); Q9QZ23(Mouse)

\*AREX continuously optimizes our products. Webpage content may not reflect the latest updates. For inquiries, please contact [info@arexbio.com](mailto:info@arexbio.com) or your local distributor.

\*Clone Number, Reactivity, Source/Host and Clonality can be found in the product name and Key Features section above.

**DATASHEET****NFU1 Rabbit Polyclonal Antibody**

CAT. NO. APA13050

**DATA**

Western blot analysis of NFU1 expression in SW480 (A), mouse liver (B), mouse heart (C), rat liver (D), rat heart (E) whole cell lysates. (Predicted band size: 12; 25; 28 kD; Observed band size: 25-28 kD)

**STORAGE**

Store at 4°C short term. For long term storage, store at -20°C, avoiding freeze/thaw cycles.

**NOTE**

For Research Use Only. Not for diagnostic, therapeutics, prophylactic or in vivo use.