

**DATASHEET**

**GTL3 Rabbit Polyclonal Antibody**

CAT. NO. APA13051

**KEY FEATURES**

Target	GTL3	Source / Host	Rabbit
Reactivity	Human, Mouse, Rat	Clonality	Polyclonal
Applications	WB, IF/ICC	Conjugation	Unconjugated
Form / Buffer	Liquid in 0.42% Potassium phosphate, 0.87% Sodium chloride, pH 7.3, 30% glycerol, and 0.01% sodium azide.		Storage at -20°C

**BACKGROUND**

Cilium- and flagellum-specific protein that plays a role in axonemal structure organization and motility . Microtubule inner protein (MIP) part of the dynein-decorated doublet microtubules (DMTs) in cilia axoneme, which is required for motile cilia beating . Involved in the regulation of the size and morphology of cilia . Required for axonemal microtubules polyglutamylation .

**APPLICATION**

To ensure optimal assay performance, AREX recommends conducting reagent titration tailored to each testing system for optimal detection results.

WB	1:500 - 1:2000
IF/ICC	1:50 - 1:100

\*Results are sample-specific. Please refer to your local assay conditions and test parameters for reference.

**PRODUCT OVERVIEW**

Description	Rabbit polyclonal antibody to GTL3
Specificity	Recognizes endogenous levels of GTL3 protein.
Antibody Type	Primary antibody
Immunogen	Recombinant fusion protein of human GTL3
Purification	The antibody was purified by immunogen affinity chromatography.
Molecular Weight	Predicted: 22 kD; Observed: 23 kD
Form/Buffer	Liquid in 0.42% Potassium phosphate, 0.87% Sodium chloride, pH 7.3, 30% glycerol, and 0.01% sodium azide.
Alternative Names	UPF0468 protein C16orf80; Transcription factor IIB
Gene Symbol	C16orf80
Entrez Gene	29105(Human); 14894(Mouse); 307642(Rat)
SwissProt	Q9Y6A4(Human); Q8BTU1(Mouse); Q499T7(Rat)

\*AREX continuously optimizes our products. Webpage content may not reflect the latest updates. For inquiries, please contact [info@arexbio.com](mailto:info@arexbio.com) or your local distributor.

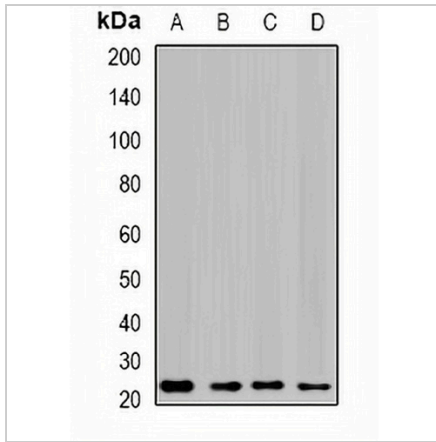
\*Clone Number, Reactivity, Source/Host and Clonality can be found in the product name and Key Features section above.

**DATASHEET**

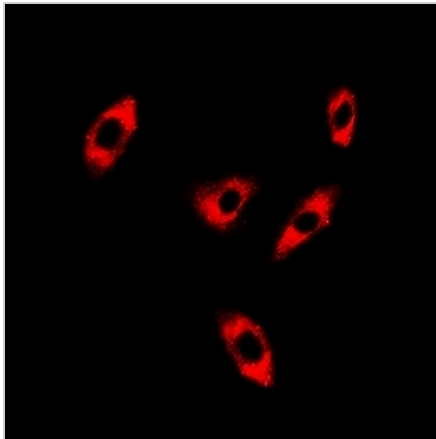
**GTL3 Rabbit Polyclonal Antibody**

CAT. NO. APA13051

**DATA**



Western blot analysis of GTL3 expression in SKOV3 (A), HepG2 (B), mouse liver (C), rat lung (D) whole cell lysates. (Predicted band size: 22 kD; Observed band size: 23 kD)



Immunofluorescent analysis of GTL3 staining in A549 cells. Formalin-fixed cells were permeabilized with 0.1% Triton X-100 in TBS for 5-10 minutes and blocked with 3% BSA-PBS for 30 minutes at room temperature. Cells were probed with the primary antibody in 3% BSA-PBS and incubated overnight at 4 °C in a humidified chamber. Cells were washed with PBST and incubated with a DyLight 594-conjugated secondary antibody (red) in PBS at room temperature in the dark.

**STORAGE**

Store at 4°C short term. For long term storage, store at -20°C, avoiding freeze/thaw cycles.

**NOTE**

For Research Use Only. Not for diagnostic, therapeutics, prophylactic or in vivo use.